

INDOOR UNIT

PARTS CATALOG

No. OBB589

Models

MSZ-EF22VEW -  MSZ-EF25VEW -  MSZ-EF35VEW - 

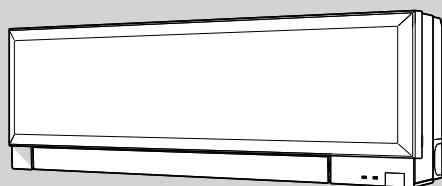
MSZ-EF42VEW -  MSZ-EF50VEW - 

MSZ-EF22VEB -  MSZ-EF25VEB -  MSZ-EF35VEB - 

MSZ-EF42VEB -  MSZ-EF50VEB - 

MSZ-EF22VES -  MSZ-EF25VES -  MSZ-EF35VES - 

MSZ-EF42VES -  MSZ-EF50VES - 



CONTENTS

- 1. RoHS PARTS LIST..... 2
- 2. OPTIONAL PARTS..... 7

SERVICE MANUAL (OBH589)

NOTE:
RoHS compliant products have <G> mark on the spec name plate.

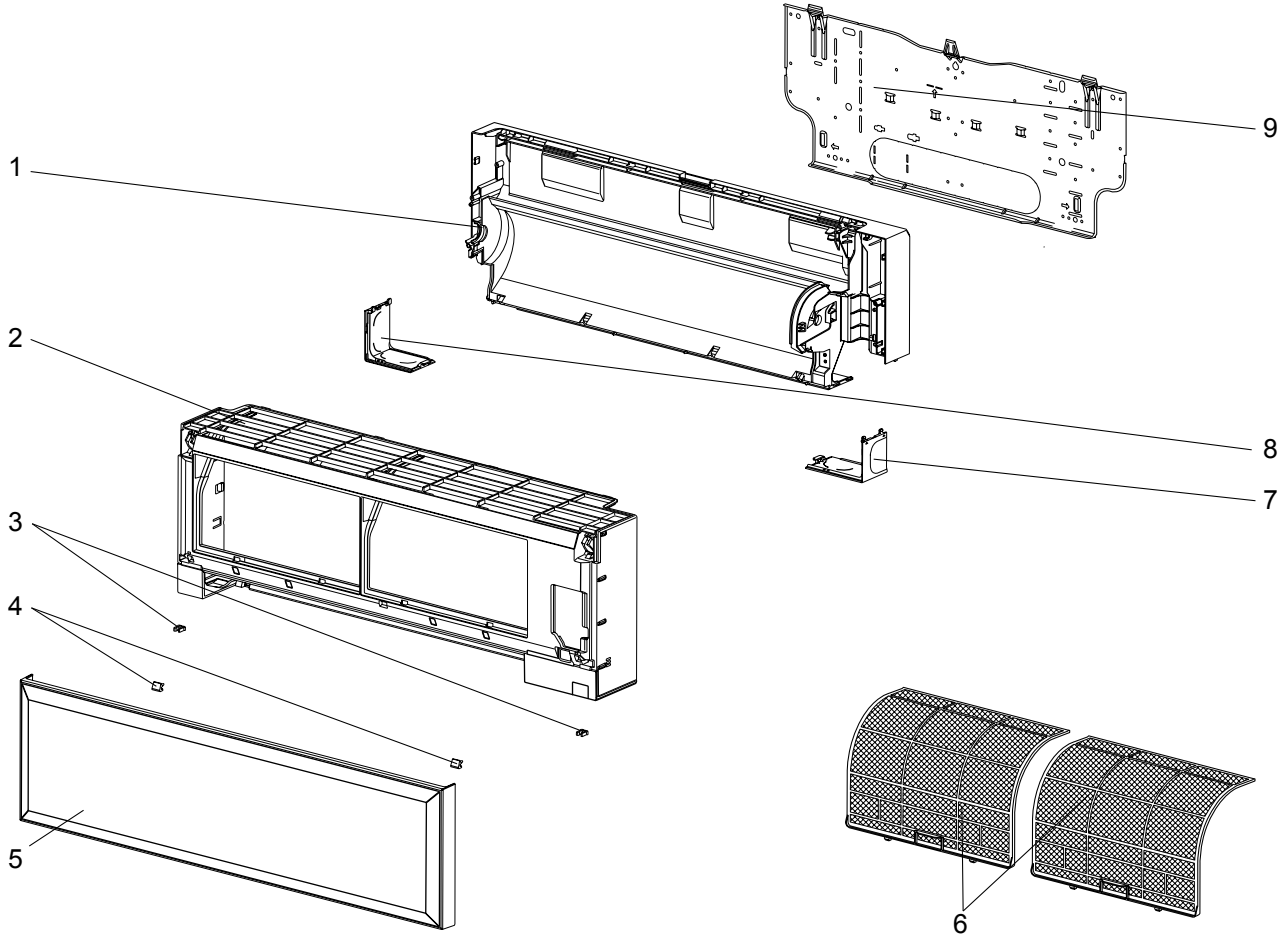


1

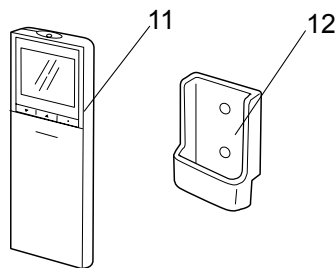
RoHS PARTS LIST

MSZ-EF22VEW MSZ-EF25VEW MSZ-EF35VEW MSZ-EF42VEW MSZ-EF50VEW
MSZ-EF22VEB MSZ-EF25VEB MSZ-EF35VEB MSZ-EF42VEB MSZ-EF50VEB
MSZ-EF22VES MSZ-EF25VES MSZ-EF35VES MSZ-EF42VES MSZ-EF50VES

1-1. INDOOR UNIT STRUCTURAL PARTS

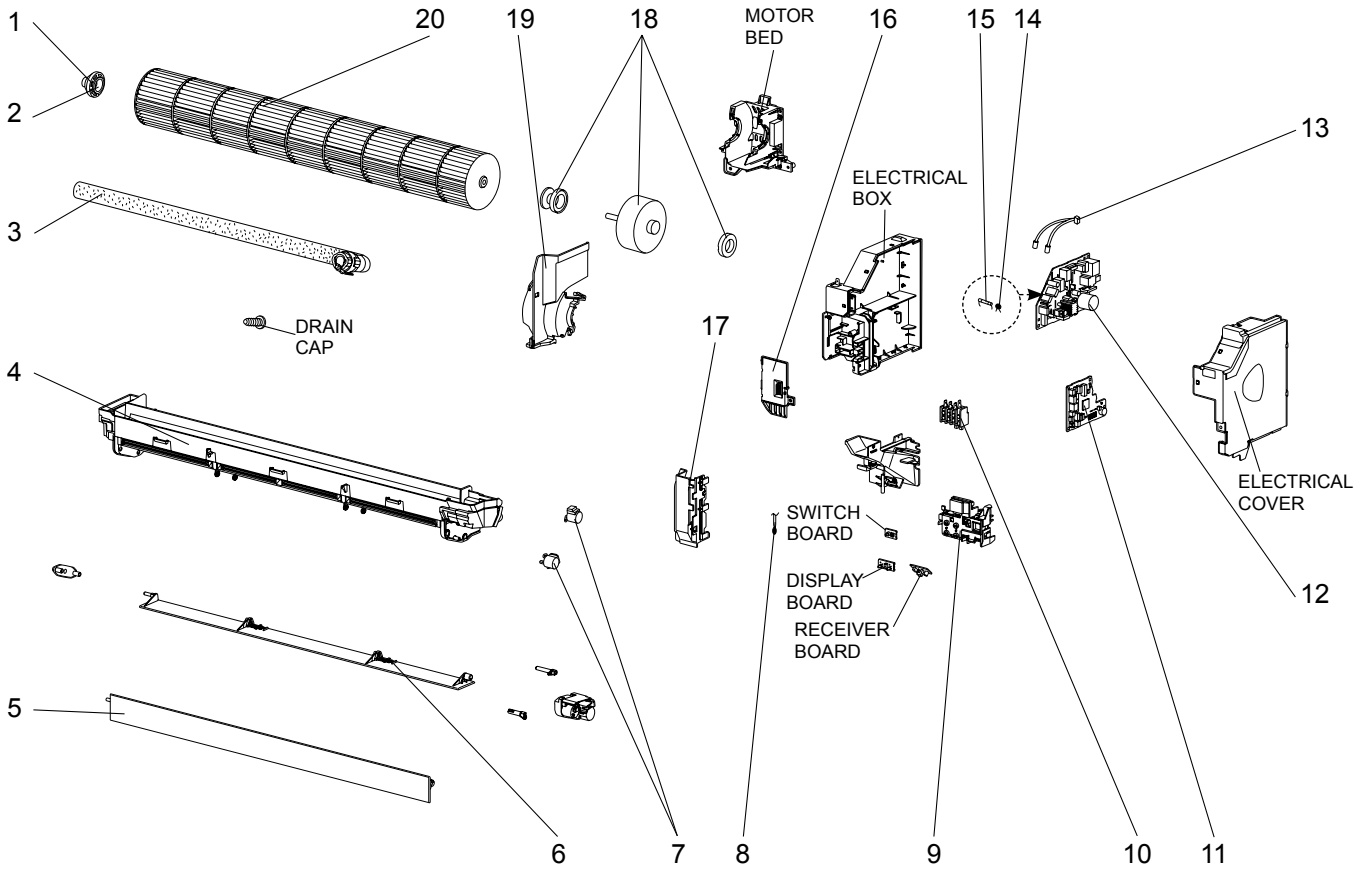


1-2. ACCESSORY AND REMOTE CONTROLLER



**MSZ-EF22VEW MSZ-EF25VEW MSZ-EF35VEW MSZ-EF42VEW MSZ-EF50VEW
 MSZ-EF22VEB MSZ-EF25VEB MSZ-EF35VEB MSZ-EF42VEB MSZ-EF50VEB
 MSZ-EF22VES MSZ-EF25VES MSZ-EF35VES MSZ-EF42VES MSZ-EF50VES**

1-3. INDOOR UNIT ELECTRICAL PARTS AND FUNCTIONAL PARTS



1-3. INDOOR UNIT ELECTRICAL PARTS AND FUNCTIONAL PARTS

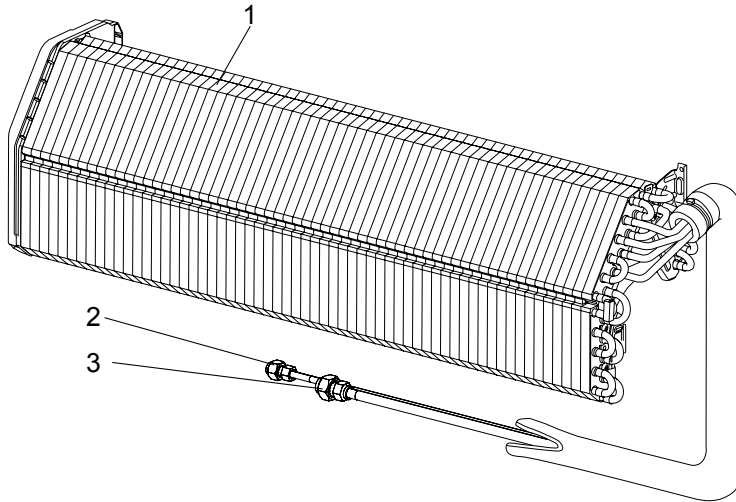
No.	RoHS	Part No.	Part name	Symbol in Wiring Diagram	Q'ty/unit															Remarks
					MSZ-EF															
					22			25			35			42			50			
VEW	VEB	VES	VEW	VEB	VES	VEW	VEB	VES	VEW	VEB	VES	VEW	VEB	VES						
-E1	-E1	-E1	-E1	-E1	-E1	-E1	-E1	-E1	-E1	-E1	-E1	-E1	-E1	-E1						
1	G	E12 751 509	BEARING MOUNT		1	1	1	1	1	1	1	1	1	1	1	1				
2	G	E12 001 504	SLEEVE BEARING		1	1	1	1	1	1	1	1	1	1	1	1				
3	G	E12 897 702	DRAIN HOSE		1	1	1	1	1	1	1	1	1	1	1	1				
4	G	E12 F95 235	NOZZLE ASSEMBLY		1									1						
	G	E12 G21 235				1									1					
	G	E12 G26 235					1									1				
5	G	E12 F95 040	VANE UPPER		1															
	G	E12 G21 040				1														
	G	E12 G26 040					1													
6	G	E12 F95 041	VANE LOWER		1															
	G	E12 G21 041				1														
	G	E12 G26 041					1													
7	G	E12 A89 303	VANE MOTOR	MV	2	2	2	2	2	2	2	2	2	2	2	2	UP & DOWN, 1 PC/SET			
8	G	E12 F95 308	ROOM TEMPERATURE THERMISTOR	RT11	1	1	1	1	1	1	1	1	1	1	1	1				
9	G	E12 F95 095	DISPLAY P.C. BOARD HOLDER		1	1	1	1	1	1	1	1	1	1	1	1				
10	G	E12 F95 375	TERMINAL BLOCK	TB	1	1	1	1	1	1	1	1	1	1	1	1				
11	G	E12 F95 452	ELECTRONIC CONTROL P.C. BOARD ※1		1	1	1													
	G	E12 F96 452						1	1	1										
	G	E12 F97 452									1	1	1							
	G	E12 F98 452												1	1	1				
	G	E12 F99 452															1	1	1	
12	G	E12 F98 440	POWER P.C. BOARD		1	1	1	1	1	1	1	1	1	1	1	1				
13	G	E12 F95 307	INDOOR COIL THERMISTOR	RT12,RT13	1	1	1	1	1	1	1	1	1	1	1	1				
14	G	E12 B75 385	VARISTOR	NR11	1	1	1	1	1	1	1	1	1	1	1	1				
15	G	E12 A49 382	FUSE	F11	1	1	1	1	1	1	1	1	1	1	1	1	T3.15AL250V			
16	G	E12 F95 784	V.A. CLAMP		1	1	1	1	1	1	1	1	1	1	1	1				
17	G	E12 F95 541	WATER CUT		1	1	1	1	1	1	1	1	1	1	1	1				
18	G	E12 F95 300	INDOOR FAN MOTOR ※2	MF	1	1	1	1	1	1	1	1	1	1	1	1	RC0J40-□□			
19	G	E12 F95 333	MOTOR BAND		1	1	1	1	1	1	1	1	1	1	1	1				
20	G	E12 F95 302	LINE FLOW FAN		1	1	1	1	1	1	1	1	1	1	1	1				

※1 Including RECEIVER BOARD, DISPLAY BOARD and SWITCH BOARD.

※2 Including FAN MOTOR RUBBER MOUNT (2 PCS/SET)

MSZ-EF22VEW MSZ-EF25VEW MSZ-EF35VEW MSZ-EF42VEW MSZ-EF50VEW
 MSZ-EF22VEB MSZ-EF25VEB MSZ-EF35VEB MSZ-EF42VEB MSZ-EF50VEB
 MSZ-EF22VES MSZ-EF25VES MSZ-EF35VES MSZ-EF42VES MSZ-EF50VES

1-4. INDOOR UNIT HEAT EXCHANGER



No.	RoHS	Part No.	Part name	Symbol in Wiring Diagram	Q'ty/unit															Remarks
					MSZ-EF															
					22			25			35			42			50			
VEW	VEB	VES	VEW	VEB	VES	VEW	VEB	VES	VEW	VEB	VES	VEW	VEB	VES						
1	G	E12 F95 620	INDOOR HEAT EXCHANGER		1	1	1	1	1	1	1	1	1	1	1	1				
	G	E12 F99 620												1	1	1				
2	G	E12 151 667	UNION (LIQUID)		1	1	1	1	1	1	1	1	1	1	1	1	1	1	1	ø6.35
3	G	E12 815 666	UNION (GAS)		1	1	1	1	1	1	1	1	1	1	1	1				
	G	E12 155 666												1	1	1	ø12.7			

2

OPTIONAL PARTS

2-1. AIR CLEANING FILTER (ELECTROSTATIC ANTI-ALLERGY ENZYME FILTER, OPERATION)

Every 3 months:

- Remove dirt by a vacuum cleaner.

When dirt cannot be removed by vacuum cleaning:

- Soak the filter and its frame in lukewarm water before rinsing it.
- After washing, dry it well in shade. Install all tabs of the air filter.

Every year:

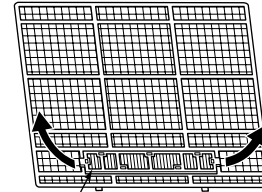
- Replace it with a new air cleaning filter for best performance.

NOTE 1: Clean the filters regularly for best performance and to reduce power consumption.

NOTE 2: Dirty filters cause condensation in the air conditioner which will contribute to the growth of fungi such as mold. It is therefore recommended to clean air filters every 2 weeks.

Model	Part No.
MSZ-EF22VEW	MAC-2320FT
MSZ-EF22VEB	
MSZ-EF22VES	
MSZ-EF25VEW	
MSZ-EF25VEB	
MSZ-EF25VES	
MSZ-EF35VEW	
MSZ-EF35VEB	
MSZ-EF35VES	
MSZ-EF42VEW	
MSZ-EF42VEB	
MSZ-EF42VES	
MSZ-EF50VEW	
MSZ-EF50VEB	
MSZ-EF50VES	

Pull to remove from the air filter



Air cleaning filter
(Electrostatic anti-allergy enzyme filter)

2-2. SOFT DRY CLOTH

- Clean the panel with the soft dry cloth when it is dirty.

Model	Part No.
MSZ-EF22VEW	MAC-1001CL-E
MSZ-EF22VES	
MSZ-EF25VEW	
MSZ-EF25VES	
MSZ-EF35VEW	
MSZ-EF35VES	
MSZ-EF42VEW	
MSZ-EF42VES	
MSZ-EF50VEW	
MSZ-EF50VES	

