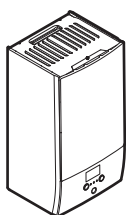




# Installation manual

## Daikin Altherma 3 R W



**EBBH04DA6V**  
**EBBH08DA6V**  
**EBBH08DA9W**

**EBBX04DA6V**  
**EBBX08DA6V**  
**EBBX08DA9W**

Installation manual  
Daikin Altherma 3 R W

**English**

- CE - DECLARACION DE CONFORMIDAD
- CE - DICHLARAZIONE DI CONFORMITA
- CE - ДИКЛАРАЦИЈА УПОМОДБИ
- CE - CONFORMITÄTSERKÄRNING

- CE - DECLARACIÓN DE CONFORMIDAD
- CE - ЗАЯВЛЕНИЕ О СООТВЕТСТВИИ
- CE - OVERENSSTEMMELSESERKLÆRING
- CE - FÖRSÄKRAN OM ÖVERENSSTÄMMELSE

- CE - ERKLÄRUNG ÜBER ÜBEREINSTIMMUNG
- CE - ЛУДЖИТИС УДЕННИКУСАИУДЕСТА
- CE - DEKLARACIJA O SOODPOBETSTWIE
- CE - DECLARAȚIE DE CONFORMITATE

- CE - ZJAVNA O SKLADNOSTI
- CE - VASTAVUSEKILARUSTUSOON
- CE - ДЕЯЛАВНАСЦЬ
- CE - ÜYÜNLÜK BEYANI

- CE - ATTIKITES/DEKLARACIJA
- CE - ATILI STI/AS/DEKLARACIJA
- CE - VYHLASENIE ZHODY

**Daikin Europe N.V.**

- 01 (en) declares under its sole responsibility that the equipment to which this declaration relates;
- 02 (fr) déclare sous sa seule responsabilité que l'équipement auquel cette déclaration s'applique;
- 03 (de) erklärt auf seine alleinige Verantwortung, dass die Ausrüstung für die diese Erklärung bestimmt ist;
- 04 (es) declara bajo su única responsabilidad que el equipo al que hace referencia la declaración;
- 05 (it) dichiara la propria responsabilità che gli apparecchi a cui è riferita questa dichiarazione;
- 06 (nl) verklaart hierbij de eigen oorspronkelijke verantwoordelijkheid dat de apparatuur waaraan deze verklaring betrekking heeft;
- 07 (pl) oświadczam, że jestem odpowiedzialny za to, że urządzenia, do których odnosi się ta deklaracja, zostały wykonane zgodnie z wymaganiami normy EN 60335-2-40;
- 08 (pt) declara sob a sua exclusiva responsabilidade que os equipamentos a que esta declaração se refere.

- 09 (ru) заверяет исключительно под свою ответственность, что оборудование, к которому относится настоящее заявление;
- 10 (uk) еквіпуєнт під свою відповідальність, що обладнання, к которому відноситься це заявлення;
- 11 (sk) vyhlasuje, že je zodpovedný za to, že zariadenia, na ktoré sa vzťahuje táto vyhlásenie, boli vykonané v súlade s požiadavkami normy EN 60335-2-40;
- 12 (sl) izjavljam, da sem sam odgovoren za to, da naprave, na katere se nanaša ta izjava, ustrezajo zahtevom norme EN 60335-2-40;
- 13 (hr) potvrđujem da sam isključivo odgovoran za to da su uređaji na koje se odnosi ova izjava izrađeni u skladu s zahtjevima norme EN 60335-2-40;
- 14 (cs) prohlašuji, že jsem výhradně zodpovědný za to, že zařízení, na která se vztahuje tato vyhlášení, byly vyrobeny v souladu s požadavky normy EN 60335-2-40;
- 15 (hu) kijelentem, hogy kizárólagos felelősségemmel nyilatkozom arról, hogy az eszközök megfelelnek az EN 60335-2-40 szabvány követelményeinek;
- 16 (fi) vakuutan, että olen yksin vastuussa siitä, että laitteet, joihin tämä julistus liittyy, on valmistettu EN 60335-2-40:n vaatimusten mukaisesti.

- 17 (da) erklærer under sit eneansvar, at udstyret, til hvilket denne erklæring gælder, er fremstillet i henhold til de tekniske specifikationer;
- 18 (no) erklærer under egen ansvar, at utrustningen som berøres av denne erklæring innlevert, er i samsvar med de tekniske spesifikasjonene;
- 19 (is) erklærir undir ábyrgð sinni, að tæki sem er nefnd í þessari erklæring er byggð í samræmi við tekniskri skilningu;
- 20 (lv) izpaukoju, ka esmu vienatīši atbildīgi par to, ka iekārtas, uz kurām attiecas šī deklarācija, ir izgatavotas saskaņā ar prasībām, kas noteiktas EN 60335-2-40 standartā;
- 21 (lt) išvardina savo atsakomybę, kad įranga, kurią apima šis pareiškimas, atitinka EN 60335-2-40 reikalavimus;
- 22 (el) δηλώνω αποκλειστικά την ευθύνη μου για το γεγονός ότι η συσκευή που αφορά αυτή την δήλωση κατασκευάστηκε σύμφωνα με τις απαιτήσεις της προδιαγραφής EN 60335-2-40;
- 23 (hu) kijelentem, hogy kizárólagos felelősségemmel nyilatkozom arról, hogy az eszközök megfelelnek az EN 60335-2-40 szabvány követelményeinek;
- 24 (sk) vyhlasujem, že som zodpovedný za to, že zariadenia, na ktoré sa vzťahuje táto vyhlásenie, boli vykonané v súlade s požiadavkami normy EN 60335-2-40;
- 25 (sl) izjavljam, da sem sam odgovoren za to, da naprave, na katere se nanaša ta izjava, ustrezajo zahtevom norme EN 60335-2-40;
- 26 (hr) potvrđujem da sam isključivo odgovoran za to da su uređaji na koje se odnosi ova izjava izrađeni u skladu s zahtjevima norme EN 60335-2-40;
- 27 (cs) prohlašuji, že jsem výhradně zodpovědný za to, že zařízení, na která se vztahuje tato vyhlášení, byly vyrobeny v souladu s požadavky normy EN 60335-2-40;
- 28 (hu) kijelentem, hogy kizárólagos felelősségemmel nyilatkozom arról, hogy az eszközök megfelelnek az EN 60335-2-40 szabvány követelményeinek;
- 29 (fi) vakuutan, että olen yksin vastuussa siitä, että laitteet, joihin tämä julistus liittyy, on valmistettu EN 60335-2-40:n vaatimusten mukaisesti.

**EHBH04DA6V, EHBX04DA6V, EHBH08DA6V, EHBX08DA6V, EHBH08DA9W, EHBX08DA9W,**

- 01 are in conformity with the following standard(s) or other normative document(s), provided that these are used in accordance with our instructions;
- 02 der/dien (folgende/n) Norm(en) oder einen anderen Normdokument oder Dokumenten entspricht/en, vorausgesetzt, dass sie gemäß unserer Anweisungen eingesetzt werden;
- 03 sont conformes à l/aux norme(s) ou autre(s) document(s) normatif(s), pour autant qu'ils soient utilisés conformément à nos instructions;
- 04 conform de volgente norm(en) of één of meer andere bindende documenten zijn, op voorwaarde dat ze worden gebruikt overeenkomstig onze instructies;
- 05 están en conformidad con la(s) siguiente(s) norma(s) u otro(s) documento(s) normativo(s), siempre que sean utilizados de acuerdo con nuestras instrucciones;
- 06 sono conformi all/le seguenti(e) standardi(e) o altro(i) documento(i) a carattere normativo, a patto che vengano usati in conformità alle nostre istruzioni;
- 07 sivo odgovara je toj/o odobrojenoj i/ili drugoj normativnoj dokumentaciji, uz uvjet da se oni koriste u skladu s našim uputama;
- 08 ошпава је тој/о одобреној и/или другој нормативној документацији, уз увјет да се они користе у складу с нашим упутима;

- 08 es/ta en conformidade com a(s) seguinte(s) norma(s) ou outro(s) documento(s) normativo(s), desde que estes sejam utilizados de acordo com as nossas instruções;
- 09 соответствует следующим стандартам или другим нормативным документам, при условии их использования согласно нашим инструкциям;
- 10 overholder følgende standard(er) eller andet/andre tekniske dokument(er), forudsat at disse anvendes i henhold til vores instruktioner;
- 11 respektive utrustning är i/överensstämmelse med och följer följande standard(er) eller andra normgivande dokument, under förutsättning att användning sker i/överensstämmelse med våra instruktioner;
- 12 respektive udstyr er i/overensstemmelse med følgende standard(er) eller andre normgivende dokument(er), under forudsætning af, at disse bruges i henhold til våre instruksjoner;
- 13 vastaavat seuraavien standardien ja muiden ohjeistettujen dokumenttien vaatimuksia edellyttäen, että niitä käytetään ohjeistettujen mukaisesti;
- 14 za predločeni, že sivo upravljeni v skladu s našimi pogoji, obpojavljajo nasledilicim normam nebo normativnim dokumentom;
- 15 u skladu sa slijedećim standardom(im) ili drugim normativnim dokumentom(im), uz uvjet da se oni koriste u skladu s našim uputama;

- 16 megfelelnek az alábbi szabvány(ok)nak, vagy egy vagy több további dokumentum(ok)nak, az azokat előírás szerint használták;
- 17 megfelelnek az alábbi szabvány(ok)nak, vagy egy vagy több további dokumentum(ok)nak, az azokat előírás szerint használták;
- 18 megfelelnek az alábbi szabvány(ok)nak, vagy egy vagy több további dokumentum(ok)nak, az azokat előírás szerint használták;
- 19 megfelelnek az alábbi szabvány(ok)nak, vagy egy vagy több további dokumentum(ok)nak, az azokat előírás szerint használták;
- 20 megfelelnek az alábbi szabvány(ok)nak, vagy egy vagy több további dokumentum(ok)nak, az azokat előírás szerint használták;
- 21 megfelelnek az alábbi szabvány(ok)nak, vagy egy vagy több további dokumentum(ok)nak, az azokat előírás szerint használták;
- 22 megfelelnek az alábbi szabvány(ok)nak, vagy egy vagy több további dokumentum(ok)nak, az azokat előírás szerint használták;
- 23 megfelelnek az alábbi szabvány(ok)nak, vagy egy vagy több további dokumentum(ok)nak, az azokat előírás szerint használták;
- 24 megfelelnek az alábbi szabvány(ok)nak, vagy egy vagy több további dokumentum(ok)nak, az azokat előírás szerint használták;
- 25 megfelelnek az alábbi szabvány(ok)nak, vagy egy vagy több további dokumentum(ok)nak, az azokat előírás szerint használták;

**EN60335-2-40,**

- 01 gemäß den Vorschriften der:
- 02 conformément aux stipulations des:
- 03 overeenkomstig de bepalingen van:
- 04 σύμφωνα με τις διατάξεις των:
- 05 secondo le prescrizioni per:
- 06 de acuerdo con el previso etc.:
- 07 в соответствии с положениями:
- 08 underlagsges af bestemmelserne i:
- 09 enligt villkoren i:
- 10 qiti i henhold til bestemmelserne i:
- 11 podlažitelnosti ustanovení předpisů:
- 12 prema odredbama:
- 13 kvoti (q):
- 14 zgborne z postopnjeniami Direktivy:
- 15 in uma prevedilnici:

- 11 Information\*
- 12 Merk\*
- 13 Huon\*
- 14 Poznámka\*
- 15 Napomena\*
- 16 Megjegyzés\*
- 17 Uvega\*
- 18 Nošt\*
- 19 Opomba\*
- 20 Märkus\*

- 01 Directives as amended
- 02 Direktiven, med senere ændringer
- 03 Direktiven, med foretagne ændringer
- 04 Richtlijnen, zoals geamendard
- 05 Direktive, sačinjena iz amandmana
- 06 Direktive, come da modifica
- 07 Östnyttiv, ömskyttiv, zpostopnjeniami Direktivy
- 08 Directives, conforme à la législation etc.
- 09 Direktiva, u skladu s prethodnim zakonima
- 10 Direktiver, med senere ændringer
- 11 Direktiv, med foretagne ændringer
- 12 Direktive, med foretagne ændringer
- 13 Richtlijnen, zoals geamendard
- 14 v priamim znaní
- 15 Spremenje, kako je izmenjeno
- 16 izmenjen (e)k i s postopnjeniami Direktivy
- 17 z prethodnim zakonima
- 18 Direktivoi, cu amendamentele respective
- 19 Direktive, cu amendamentele respective
- 20 Direktiv, cu modificariile respective
- 21 Direktive, cu revizua i amandmanilor
- 22 Direktive, cu revizua i amandmanilor
- 23 Direktive, cu revizua i amandmanilor
- 24 Sporazbe, u skladu s prethodnim zakonima
- 25 Dajgizimligjalejtje Yonemektar.

**Low Voltage 2014/35/EU  
Electromagnetic Compatibility 2014/30/EU**

- 01 Note\* as set out in <A> and judged positively by <B>
- 02 Hinweis\* wie in <A> ausgeführt und von <B> positiv beurteilt/gemäß Zertifikat <C>
- 03 Remarque\* tel que défini dans <A> et évalué positivement par <B>
- 04 Bemerk\* zoals vermeld in <A> en positief beoordeeld door <B>
- 05 Nota\* como se establece en <A> y es valorado positivamente por <B>
- 06 Nota\* delimitado nel <A> e julgado positivamente de <B>
- 07 Zvezjevanost\* onaj u skladu s <A> i pozitivno ocijenjen od strane <B>
- 08 Nošt\* kako je izloženo u <A> i pozitivno ocijenjeno od strane <B>
- 09 Opomba\* naagu on naveden dokument <A> ja heaks kiidetud <B> järgi vastavalt sertifikaadile <C>
- 10 Märkus\* nagu on navedatud dokumendis <A> ja heaks kiidetud <B> järgi vastavalt sertifikaadile <C>

- 21 Zabeleška\* izjavo e izpolnjeno s <A> i ocijeneno pozitivno od <B>
- 22 Pastaba\* karpustavje <A> i karpigijevani nusjavyta <B> pagal sertifikata <C>
- 23 Pízním\* ka notován <A> an abstrakci <B> pozitivně vyjádřením v souladu s certifikátem <C>
- 24 Poznámka\* ako bolo uvedené v <A> a pozitívne zistené <B> v súlade s osvedčením <C>
- 25 Nošt\* tarindan olumli olak degjenditindigi gbi.

- 21 Zabeleška\* izjavo e izpolnjeno s <A> i ocijeneno pozitivno od <B>
- 22 Pastaba\* karpustavje <A> i karpigijevani nusjavyta <B> pagal sertifikata <C>
- 23 Pízním\* ka notován <A> an abstrakci <B> pozitivně vyjádřením v souladu s certifikátem <C>
- 24 Poznámka\* ako bolo uvedené v <A> a pozitívne zistené <B> v súlade s osvedčením <C>
- 25 Nošt\* tarindan olumli olak degjenditindigi gbi.



**Shigeki Morita**  
Director  
Ostend, 2nd of October 2017



3P507286-1

## Table of contents

<b>1</b>	<b>About the documentation</b>	<b>3</b>	6.2	Checklist during commissioning	21
1.1	About this document	3	6.2.1	To check the minimum flow rate	21
<b>2</b>	<b>About the box</b>	<b>4</b>	6.2.2	To perform an air purge	21
2.1	Indoor unit	4	6.2.3	To perform an operation test run	22
2.1.1	To remove the accessories from the indoor unit	4	6.2.4	To perform an actuator test run	22
<b>3</b>	<b>Preparation</b>	<b>4</b>	6.2.5	To perform an underfloor heating screed dryout	22
3.1	Preparing the installation site	4	<b>7</b>	<b>Hand-over to the user</b>	<b>23</b>
3.1.1	Installation site requirements of the indoor unit	4	<b>8</b>	<b>Technical data</b>	<b>24</b>
3.2	Preparing water piping	6	8.1	Piping diagram: Indoor unit	24
3.2.1	To check the water volume and flow rate	6	8.2	Wiring diagram: Indoor unit	25
3.3	Preparing electrical wiring	6	8.3	Table 1 – Maximum refrigerant charge allowed in a room: indoor unit	28
3.3.1	Overview of electrical connections for external and internal actuators	6	8.4	Table 2 – Minimum floor area: indoor unit	28
<b>4</b>	<b>Installation</b>	<b>7</b>	8.5	Table 3 – Minimum venting opening area for natural ventilation: indoor unit	28
4.1	Opening the units	7	<b>1</b>	<b>About the documentation</b>	
4.1.1	To open the indoor unit	7	1.1	<b>About this document</b>	
4.2	Mounting the indoor unit	7	<b>Target audience</b>		
4.2.1	To install the indoor unit	7	Authorised installers		
4.2.2	To connect the drain hose to the drain	8	<b>Documentation set</b>		
4.3	Connecting refrigerant piping	8	This document is part of a documentation set. The complete set consists of:		
4.3.1	To connect the refrigerant piping to the indoor unit	8	▪ <b>General safety precautions:</b>		
4.4	Connecting water piping	9	▪ Safety instructions that you must read before installing		
4.4.1	To connect the water piping	9	▪ Format: Paper (in the box of the indoor unit)		
4.4.2	To fill the water circuit	9	▪ <b>Indoor unit installation manual:</b>		
4.4.3	To fill the domestic hot water tank	9	▪ Installation instructions		
4.4.4	To insulate the water piping	9	▪ Format: Paper (in the box of the indoor unit)		
4.5	Connecting the electrical wiring	9	▪ <b>Outdoor unit installation manual:</b>		
4.5.1	About electrical compliance	9	▪ Installation instructions		
4.5.2	To connect the electrical wiring on the indoor unit	9	▪ Format: Paper (in the box of the outdoor unit)		
4.5.3	To connect the main power supply	10	▪ <b>Installer reference guide:</b>		
4.5.4	To connect the backup heater power supply	10	▪ Preparation of the installation, good practices, reference data,...		
4.5.5	To connect the shut-off valve	12	▪ Format: Digital files on <a href="http://www.daikineurope.com/support-and-manuals/product-information/">http://www.daikineurope.com/support-and-manuals/product-information/</a>		
4.5.6	To connect the electricity meters	12	▪ <b>Addendum book for optional equipment:</b>		
4.5.7	To connect the domestic hot water pump	12	▪ Additional info about how to install optional equipment		
4.5.8	To connect the alarm output	12	▪ Format: Paper (in the box of the indoor unit) + Digital files on <a href="http://www.daikineurope.com/support-and-manuals/product-information/">http://www.daikineurope.com/support-and-manuals/product-information/</a>		
4.5.9	To connect the space cooling/heating ON/OFF output	12	Latest revisions of the supplied documentation may be available on the regional Daikin website or via your dealer.		
4.5.10	To connect the changeover to external heat source	13	The original documentation is written in English. All other languages are translations.		
4.5.11	To connect the power consumption digital inputs	13	<b>Technical engineering data</b>		
4.5.12	To connect the safety thermostat (normally closed contact)	13	▪ A <b>subset</b> of the latest technical data is available on the regional Daikin website (publicly accessible).		
4.6	Finishing the indoor unit installation	13	▪ The <b>full set</b> of latest technical data is available on the Daikin Business Portal (authentication required).		
4.6.1	To close the indoor unit	13			
<b>5</b>	<b>Configuration</b>	<b>14</b>			
5.1	Overview: Configuration	14			
5.1.1	To access the most used commands	14			
5.2	Configuration wizard	15			
5.2.1	Configuration wizard: Language	15			
5.2.2	Configuration wizard: Time and date	15			
5.2.3	Configuration wizard: System	15			
5.2.4	Configuration wizard: Backup heater	16			
5.2.5	Configuration wizard: Main zone	17			
5.2.6	Configuration wizard: Additional zone	17			
5.2.7	Detailed screen with weather-dependent curve	18			
5.2.8	Configuration wizard: Tank	18			
5.3	Settings menu	19			
5.3.1	Main zone	19			
5.3.2	Additional zone	19			
5.3.3	Information	19			
5.4	Menu structure: Overview installer settings	20			
<b>6</b>	<b>Commissioning</b>	<b>21</b>			
6.1	Checklist before commissioning	21			

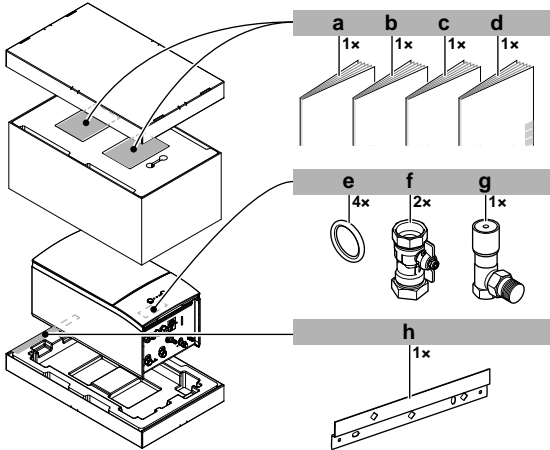
## 2 About the box

### 2 About the box

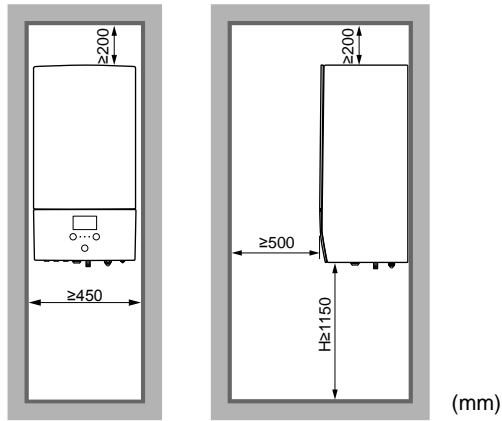
#### 2.1 Indoor unit

##### 2.1.1 To remove the accessories from the indoor unit

Some accessories are located inside the unit. To open the unit, see "4.1.1 To open the indoor unit" [p. 7].



- a General safety precautions
- b Addendum book for optional equipment
- c Indoor unit installation manual
- d Operation manual
- e Sealing ring for shut-off valve
- f Shut-off valve
- g Overpressure bypass valve
- h Wall bracket



H Height measured from the bottom of the casing to the floor

#### Special requirements for R32



#### WARNING

- Do NOT pierce or burn.
- Do NOT use means to accelerate the defrosting process or to clean the equipment, other than those recommended by the manufacturer.
- Be aware that R32 refrigerant does NOT contain an odour.



#### WARNING

The appliance shall be stored so as to prevent mechanical damage and in a well-ventilated room without continuously operating ignition sources (example: open flames, an operating gas appliance or an operating electric heater) and have a room size as specified below.



#### NOTICE

- Do NOT re-use joints which have been used already.
- Joints made in installation between parts of refrigerant system shall be accessible for maintenance purposes.



#### WARNING

Make sure installation, servicing, maintenance and repair comply with instructions from Daikin and with applicable legislation (for example national gas regulation) and are executed only by authorised persons.



#### NOTICE

- Pipework shall be protected from physical damage.
- Installation of pipework shall be kept to a minimum.

## 3 Preparation

### 3.1 Preparing the installation site



#### WARNING

The appliance shall be stored in a room without continuously operating ignition sources (example: open flames, an operating gas appliance or an operating electric heater).



#### WARNING

DO NOT reuse refrigerant piping that has been used with any other refrigerant. Replace the refrigerant pipes or clean thoroughly.

#### 3.1.1 Installation site requirements of the indoor unit

- The indoor unit is designed for indoor installation only and for the following ambient temperatures:
  - Space heating operation: 5~30°C
  - Space cooling operation: 5~35°C
  - Domestic hot water production: 5~35°C
- Mind the following spacing installation guidelines:

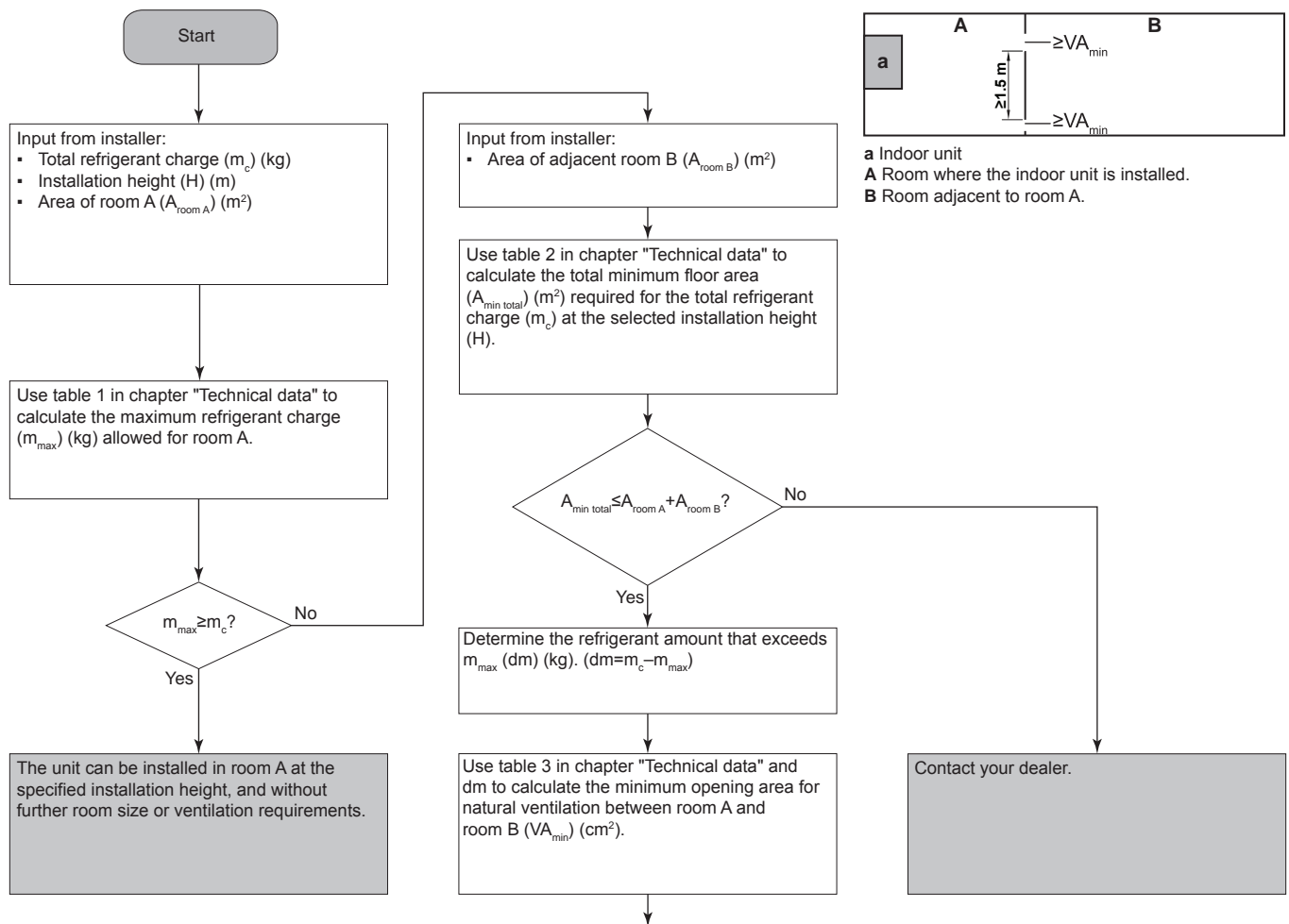
If the total refrigerant charge in the system is  $\geq 1.84$  kg (i.e. if the piping length is  $\geq 27$  m), you need to comply with the minimum floor area requirements as described in the following flow chart. The flow chart uses the following tables: "8.3 Table 1 – Maximum refrigerant charge allowed in a room: indoor unit" [p 28], "8.4 Table 2 – Minimum floor area: indoor unit" [p 28] and "8.5 Table 3 – Minimum venting opening area for natural ventilation: indoor unit" [p 28].

**i** INFORMATION

Systems with a total refrigerant charge ( $m_c$ )  $< 1.84$  kg (i.e. if the piping length is  $< 27$  m) are NOT subjected to any requirements to the installation room.

**i** INFORMATION

**Multiple indoor units.** If two or more indoor units are installed in a room, you must consider the maximum refrigerant charge that can be released in the room when a SINGLE leak occurs. **Example:** If two indoor units are installed in the room, each with its own outdoor unit, then you have to consider the refrigerant charge of the largest indoor-outdoor combination.



Unit can be installed at **room A** if:

- 2 ventilation openings (permanently open) are provided between room A and B, 1 at the top and 1 at the bottom.
- Bottom opening:** The bottom opening must meet the minimum area requirements ( $VA_{min}$ ). It must be as close as possible to the floor and lower than H. If the ventilation opening starts from the floor, the height must be  $\geq 20$  mm. The bottom of the opening must be situated  $\leq 100$  mm from the floor. At least 50% of the required opening area must be situated  $< 200$  mm from the floor. The entire area of the opening must be situated  $< 300$  mm from the floor.
- Top opening:** The area of the top opening must be larger than or equal to the bottom opening. The bottom of the top opening must be situated at least 1.5 m above the top of the bottom opening.
- Ventilation openings to the outside are NOT considered suitable ventilation openings (the user can block them when it is cold).

## 3 Preparation

### 3.2 Preparing water piping

#### NOTICE

In case of plastic pipes, make sure they are fully oxygen diffusion tight according to DIN 4726. The diffusion of oxygen into the piping can lead to excessive corrosion.

- **Valve towards expansion vessel.** The valve towards the expansion vessel (if equipped) **MUST** be open.

#### 3.2.1 To check the water volume and flow rate

##### Minimum water volume

Check that the total water volume in the installation is minimum 10 litres, the internal water volume of the indoor unit NOT included.

#### NOTICE

When circulation in each space heating/cooling loop is controlled by remotely controlled valves, it is important that the minimum water volume is guaranteed, even if all of the valves are closed.

##### Minimum flow rate

Check that the minimum flow rate in the installation is guaranteed in all conditions. This minimum flow rate is required during defrost/backup heater operation. For this purpose, use the overpressure bypass valve delivered with the unit, and respect the minimum water volume.

#### NOTICE

When circulation in each or certain space heating loops is controlled by remotely controlled valves, it is important that the minimum flow rate is guaranteed, even if all valves are closed. In case the minimum flow rate cannot be reached, a flow error 7H will be generated (no heating or operation).

See the installer reference guide for more information.

##### Minimum required flow rate

12 l/min

See the recommended procedure as described in "6.2 Checklist during commissioning" [▶ 21].

### 3.3 Preparing electrical wiring

#### 3.3.1 Overview of electrical connections for external and internal actuators

Item	Description	Wires	Maximum running current
<b>Outdoor unit and indoor unit power supply</b>			
1	Power supply for outdoor unit	2+GND	(a)
2	Power supply and interconnection cable to indoor unit	3	(g)
3	Power supply for backup heater	See table below.	—
4	Preferential kWh rate power supply (voltage free contact)	2	(e)
5	Normal kWh rate power supply	2	6.3 A
<b>Optional equipment</b>			
6	3-way valve	3	100 mA <sup>(b)</sup>

Item	Description	Wires	Maximum running current
7	Power supply for booster heater and thermal protection (from indoor unit)	4+GND	(c)
8	Power supply for booster heater (to indoor unit)	2+GND	13 A
9	Domestic hot water tank thermistor	2	(d)
10	User interface used as room thermostat	2	(f)
11	Room thermostat	3 or 4	100 mA <sup>(b)</sup>
12	Outdoor ambient temperature sensor	2	(b)
13	Indoor ambient temperature sensor	2	(b)
14	Heat pump convector	2	100 mA <sup>(b)</sup>
<b>Field supplied components</b>			
15	Shut-off valve	2	100 mA <sup>(b)</sup>
16	Electricity meter	2 (per meter)	(b)
17	Domestic hot water pump	2	(b)
18	Alarm output	2	(b)
19	Changeover to external heat source control	2	(b)
20	Space cool/heat operation control	2	(b)
21	Power consumption digital inputs	2 (per input signal)	(b)
22	Safety thermostat	2	(e)

(a) Refer to name plate on outdoor unit.

(b) Minimum cable section 0.75 mm<sup>2</sup>.

(c) Cable section 2.5 mm<sup>2</sup>.

(d) The thermistor and connection wire (12 m) are delivered with the domestic hot water tank.

(e) Cable section 0.75 mm<sup>2</sup> till 1.25 mm<sup>2</sup>; maximum length: 50 m. Voltage-free contact shall ensure the minimum applicable load of 15 V DC, 10 mA.

(f) Cable section 0.75 mm<sup>2</sup> till 1.25 mm<sup>2</sup>; maximum length: 500 m. Applicable for both single user interface and dual user interface connection.

(g) Cable section 1.5 mm<sup>2</sup>.



#### NOTICE

More technical specifications of the different connections are indicated on the inside of the indoor unit.

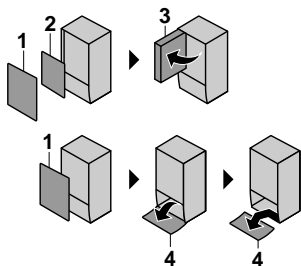
Backup heater type	Power supply	Required number of conductors
*6V	1N~ 230 V (6V)	2+GND
	3~ 230 V (6T1)	3+GND
*9W	3N~ 400 V	4+GND

## 4 Installation

### 4.1 Opening the units

#### 4.1.1 To open the indoor unit

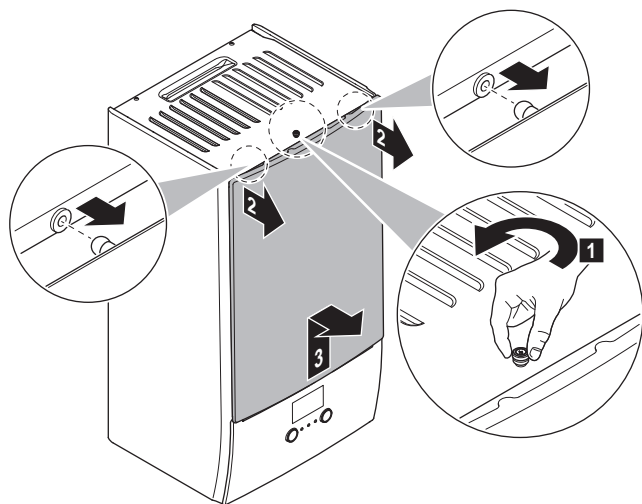
##### Overview



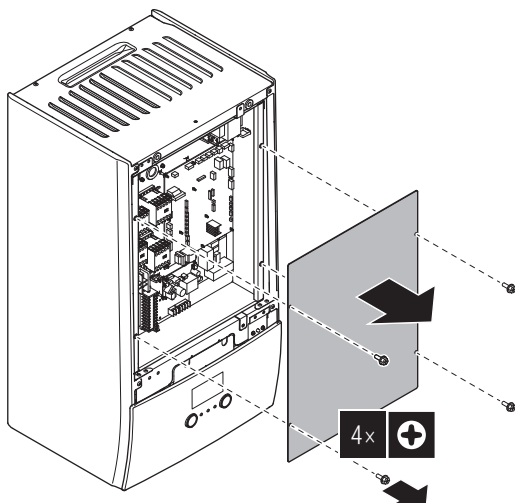
- 1 Front panel
- 2 Switch box cover
- 3 Switch box
- 4 User interface panel

##### Open

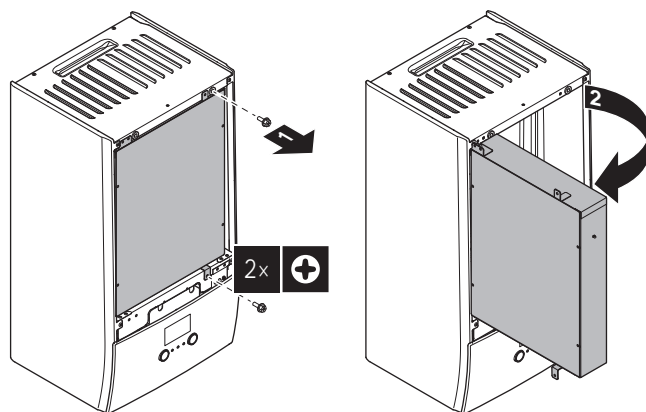
- 1 Remove the front panel.



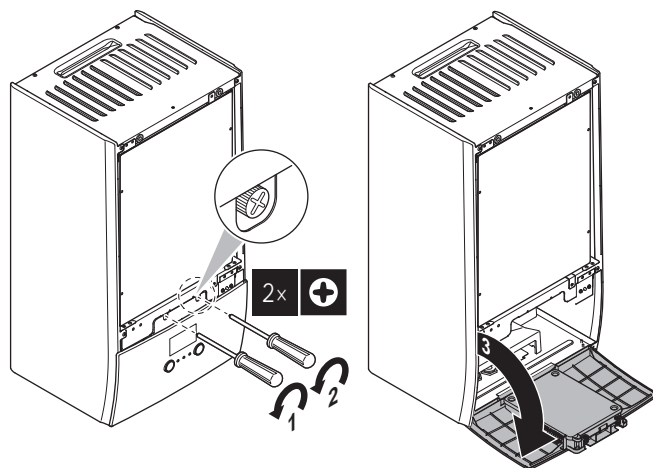
- 2 If you have to connect electrical wiring, remove the switch box cover.



- 3 If you have to do work behind the switch box, open the switch box.



- 4 If you have to do work behind the user interface panel or upload new software into the user interface, open the user interface panel.

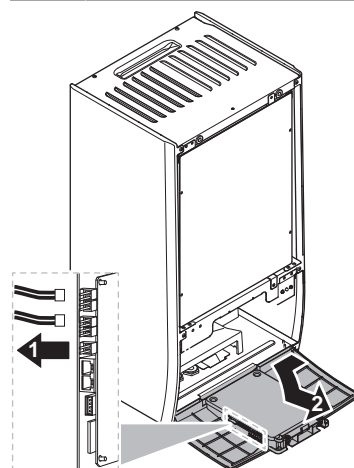


- 5 Optional: Remove the user interface panel.



##### NOTICE

If you remove the user interface panel, also disconnect the cables from the back of the user interface panel to prevent damage.

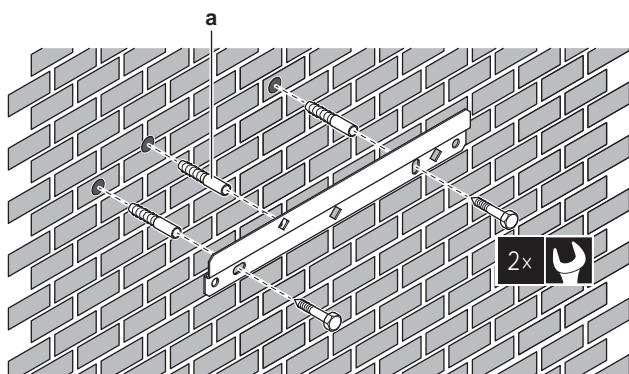


### 4.2 Mounting the indoor unit

#### 4.2.1 To install the indoor unit

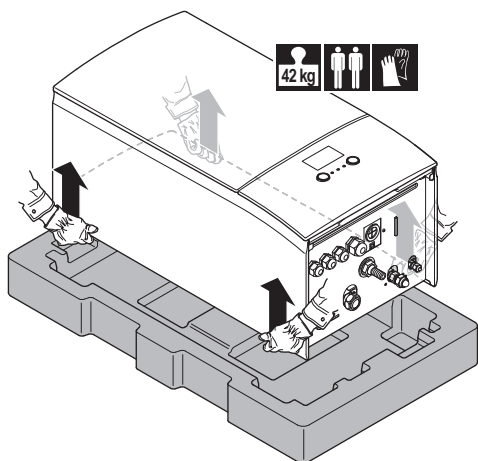
- 1 Fix the wall bracket (accessory) to the wall (level) with 2 Ø8 mm bolts.

## 4 Installation



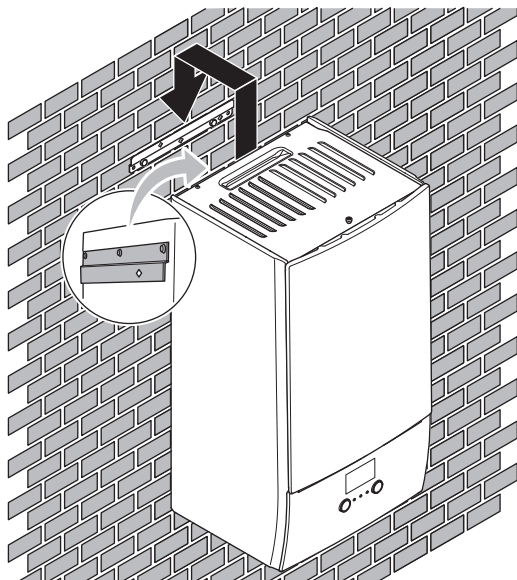
a Optional: If you want to fix the unit to the wall from inside the unit, provide an additional screw plug.

### 2 Lift the unit.



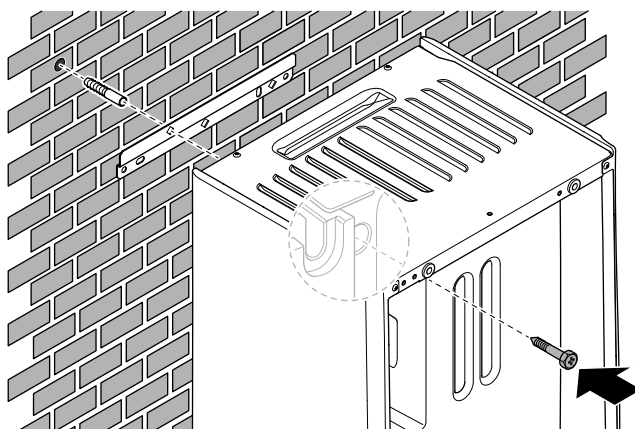
### 3 Attach the unit to the wall bracket:

- Tilt the top of the unit against the wall at the position of the wall bracket.
- Slide the bracket on the back of the unit over the wall bracket. Make sure the unit is fixed properly.



### 4 Optional: If you want to fix the unit to the wall from inside the unit:

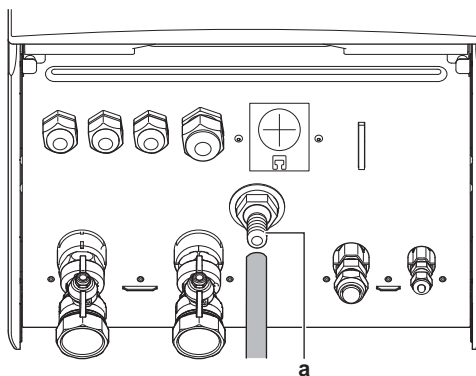
- Remove the upper front panel, and open the switch box. See "4.1.1 To open the indoor unit" [▶ 7].
- Fix the unit to the wall with an Ø8 mm screw.



### 4.2.2 To connect the drain hose to the drain

Water coming from the pressure relief valve is collected in the drain pan. You must connect the drain pan to an appropriate drain according to the applicable legislation.

- 1 Connect a drain tube (field supply) to the drain pan connector as follows:



a Drain pan connector

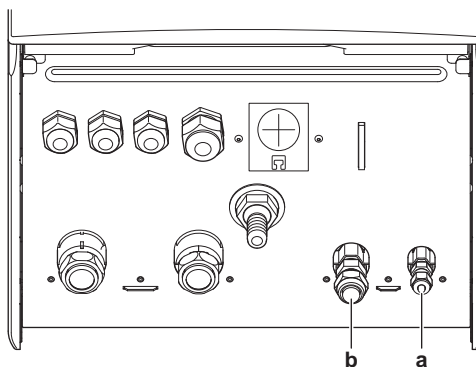
It is recommended to use a tundish to collect the water.

## 4.3 Connecting refrigerant piping

See the installation manual of the outdoor unit for all guidelines, specifications and installation instructions.

### 4.3.1 To connect the refrigerant piping to the indoor unit

- 1 Connect the liquid stop valve from the outdoor unit to the refrigerant liquid connection of the indoor unit.



a Refrigerant liquid connection  
b Refrigerant gas connection

- 2 Connect the gas stop valve from the outdoor unit to the refrigerant gas connection of the indoor unit.

## 4.4 Connecting water piping

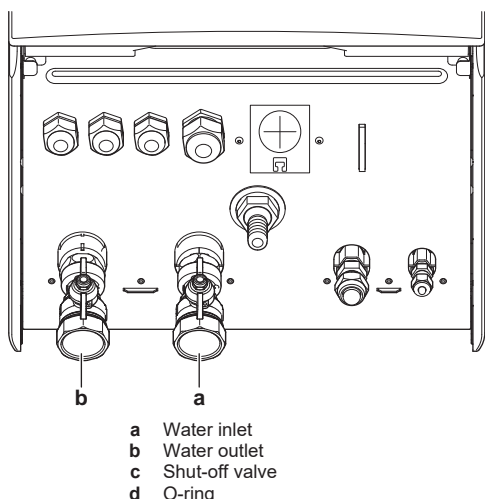
### 4.4.1 To connect the water piping

#### ! NOTICE

Do NOT use excessive force when connecting the piping. Deformation of the piping can cause malfunctioning of the unit.

To facilitate service and maintenance, 2 shut-off valves and 1 overpressure bypass valve are provided. Mount the shut-off valves on the space heating water inlet and space heating water outlet. To ensure the minimum flow rate (and prevent overpressure), install the overpressure bypass valve on the space heating water outlet.

- 1 Install the shut-off valves on the water pipes.



- 2 Screw the indoor unit nuts on the shut-off valves.
- 3 Connect the field piping on the shut-off valves.
- 4 In case of connection with the optional domestic hot water tank, see the installation manual of the domestic hot water tank.

#### ! NOTICE

Install air purge valves at all local high points.

#### ! NOTICE



**Overpressure bypass valve** (delivered as accessory). We recommend to install the overpressure bypass valve in the space heating water circuit.

- Mind the minimum water volume when choosing the installation location of the overpressure bypass valve (at the indoor unit, or at the collector). See "[3.2.1 To check the water volume and flow rate](#)" [p 6].
- Mind the minimum flow rate when adjusting the overpressure bypass valve setting. See "[3.2.1 To check the water volume and flow rate](#)" [p 6] and "[6.2.1 To check the minimum flow rate](#)" [p 21].

#### ! NOTICE

In case an optional domestic hot water tank is installed: A pressure relief valve (field supply) with an opening pressure of maximum 10 bar (= 1 MPa) must be installed on the domestic cold water inlet connection in accordance with the applicable legislation.

### 4.4.2 To fill the water circuit

To fill the water circuit, use a field supply filling kit. Make sure you comply with the applicable legislation.

#### i INFORMATION

Make sure both air purge valves (one on the magnetic filter and one on the backup heater) are open.

### 4.4.3 To fill the domestic hot water tank

See the installation manual of the domestic hot water tank.

### 4.4.4 To insulate the water piping

The piping in the complete water circuit MUST be insulated to prevent condensation during cooling operation and reduction of the heating and cooling capacity.

If the temperature is higher than 30°C and the humidity is higher than RH 80%, the thickness of the insulation materials should be at least 20 mm to prevent condensation on the surface of the insulation.

## 4.5 Connecting the electrical wiring



**DANGER: RISK OF ELECTROCUTION**



**WARNING**

ALWAYS use multicore cable for power supply cables.

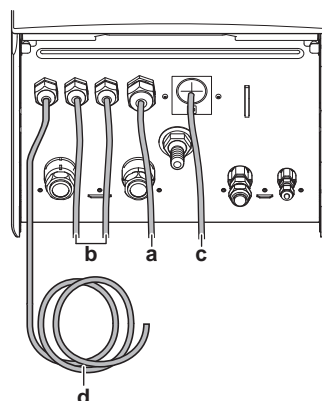
### 4.5.1 About electrical compliance

Only for the backup heater of the indoor unit

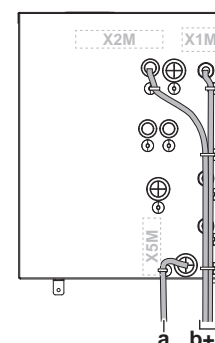
See "[4.5.4 To connect the backup heater power supply](#)" [p 10].

### 4.5.2 To connect the electrical wiring on the indoor unit

- 1 Open the switch box so that you can access the back of the switch box. See "[4.1.1 To open the indoor unit](#)" [p 7].
- 2 Route the wiring as follows:
  - Enter the unit from the bottom.
  - Route the wiring via the back of the switch box.
  - Fix the cables with cable ties to the cable tie mountings at the back of the switch box.



a, b, c Field wiring (see table below)  
d Factory-mounted cable for power supply of backup heater



**INFORMATION**

When installing field supply or option cables, foresee sufficient cable length. This will make it possible to open the switch box and gain access to other components during service.

## 4 Installation

Routing	Possible cables (depending on unit type and installed options)
a Low voltage	<ul style="list-style-type: none"> <li>• Preferential power supply contact</li> <li>• User interface used as room thermostat (option)</li> <li>• Power consumption digital inputs (field supply)</li> <li>• Outdoor ambient temperature sensor (option)</li> <li>• Indoor ambient temperature sensor (option)</li> <li>• Electrical meters (field supply)</li> <li>• Safety thermostat (field supply)</li> </ul>
b High voltage power supply	<ul style="list-style-type: none"> <li>• Interconnection cable</li> <li>• Normal kWh rate power supply</li> <li>• Preferential kWh rate power supply</li> </ul>
c High voltage control signal	<ul style="list-style-type: none"> <li>• Heat pump convector (option)</li> <li>• Room thermostat (option)</li> <li>• Shut-off valve (field supply)</li> <li>• Domestic hot water pump (field supply)</li> <li>• Alarm output</li> <li>• Changeover to external heat source control</li> <li>• Space cool/heat operation control</li> </ul>
d High voltage power supply (factory-mounted cable)	<ul style="list-style-type: none"> <li>• Power supply for backup heater</li> </ul>



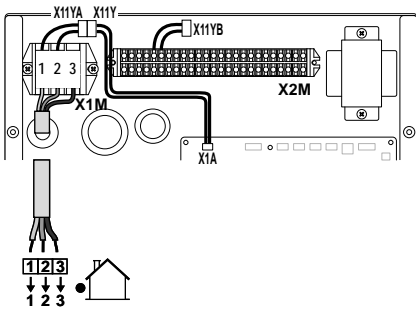
### CAUTION

Do NOT push or place redundant cable length in the unit.

### 4.5.3 To connect the main power supply

- 1 Connect the main power supply.

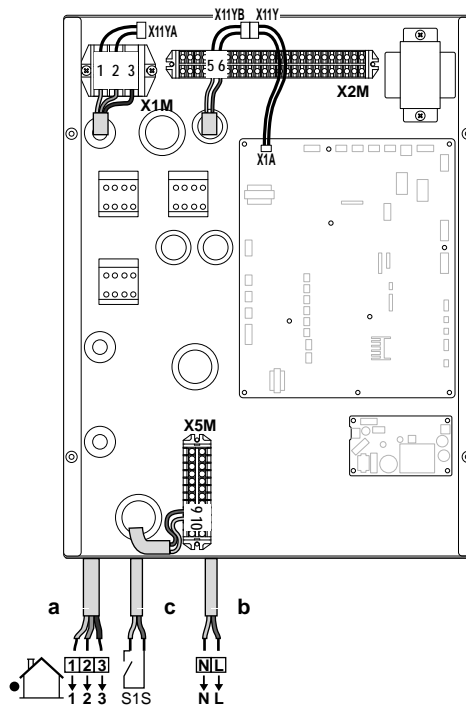
#### In case of normal kWh rate power supply



a Interconnection cable (=main power supply)

#### In case of preferential kWh rate power supply

Connect X11Y to X11YB.



a Interconnection cable (=main power supply)  
b Normal kWh rate power supply  
c Preferential power supply contact

- 2 Fix the cables with cable ties to the cable tie mountings.



### INFORMATION

In case of preferential kWh rate power supply, connect X11Y to X11YB. The necessity of separate normal kWh rate power supply to indoor unit (b) X2M/5+6 depends on the type of preferential kWh rate power supply.

Separate connection to the indoor unit is required:

- if preferential kWh rate power supply is interrupted when active, OR
- if no power consumption of the indoor unit is allowed at the preferential kWh rate power supply when active.



### INFORMATION

The preferential kWh rate power supply contact is connected to the same terminals (X5M/9+10) as the safety thermostat. Thus, the system can have EITHER preferential kWh rate power supply OR a safety thermostat.

### 4.5.4 To connect the backup heater power supply



### CAUTION

If the indoor unit has a tank with a built-in electrical booster heater, use a dedicated power circuit for the backup heater and booster heater. NEVER use a power circuit shared by another appliance. This power circuit must be protected with the required safety devices according to the applicable legislation.



### CAUTION

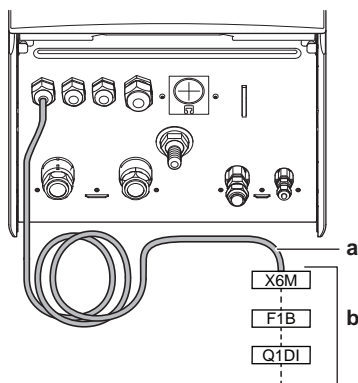
To guarantee the unit is completely earthed, always connect the backup heater power supply and the earth cable.

The backup heater capacity can vary, depending on the indoor unit model. Make sure that the power supply is in accordance with the backup heater capacity, as listed in the table below.

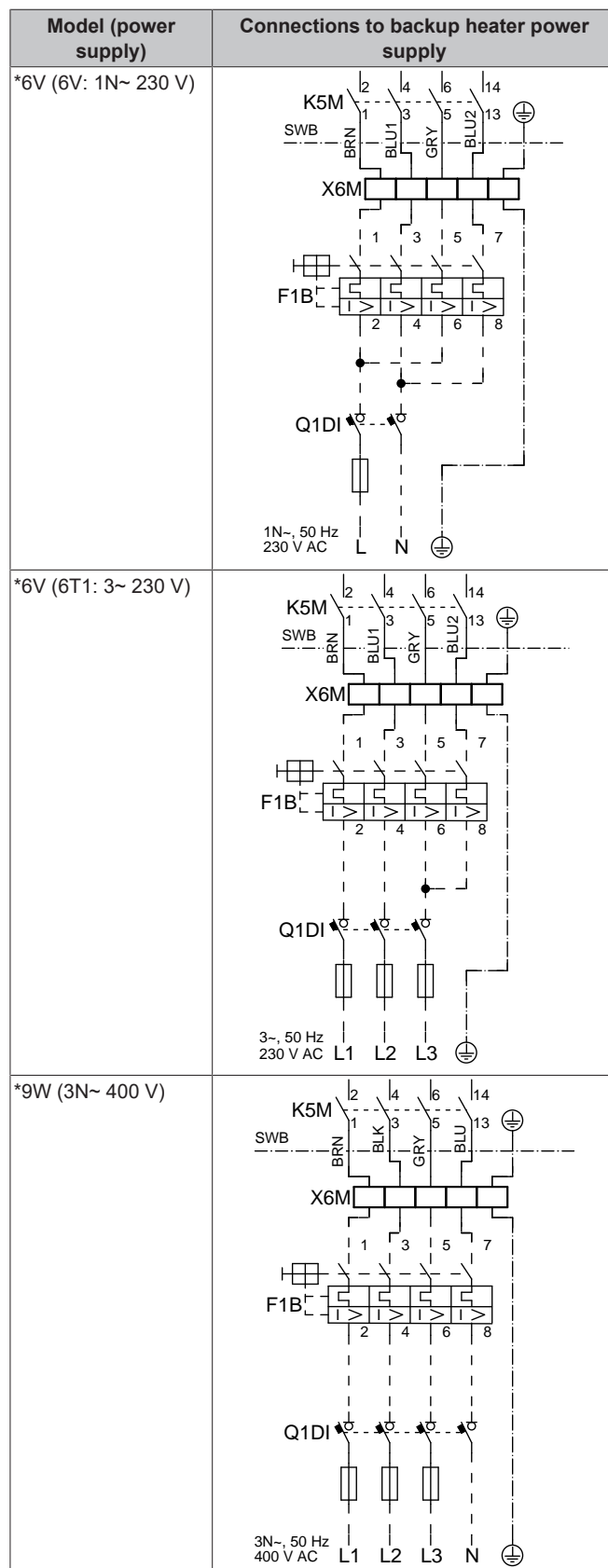
Backup heater type	Backup heater capacity	Power supply	Maximum running current	Z <sub>max</sub>
*6V	2 kW	1N~ 230 V <sup>(c)</sup>	9 A	—
	4 kW	1N~ 230 V <sup>(c)</sup>	17 A <sup>(a)(b)</sup>	0.22 Ω
	6 kW	1N~ 230 V <sup>(c)</sup>	26 A <sup>(a)(b)</sup>	0.22 Ω
	2 kW	3~ 230 V <sup>(d)</sup>	5 A	—
	4 kW	3~ 230 V <sup>(d)</sup>	10 A	—
*9W	3 kW	3N~ 400 V	4 A	—
	6 kW	3N~ 400 V	9 A	—
	9 kW	3N~ 400 V	13 A	—

- (a) Equipment complying with EN/IEC 61000-3-12 (European/International Technical Standard setting the limits for harmonic currents produced by equipment connected to public low-voltage systems with input current >16 A and ≤75 A per phase.).
- (b) This equipment complies with EN/IEC 61000-3-11 (European/International Technical Standard setting the limits for voltage changes, voltage fluctuations and flicker in public low-voltage supply systems for equipment with rated current ≤75 A) provided that the system impedance Z<sub>sys</sub> is less than or equal to Z<sub>max</sub> at the interface point between the user's supply and the public system. It is the responsibility of the installer or user of the equipment to ensure, by consultation with the distribution network operator if necessary, that the equipment is connected only to a supply with a system impedance Z<sub>sys</sub> less than or equal to Z<sub>max</sub>.
- (c) (6V)
- (d) (6T1)

Connect the backup heater power supply as follows:



- a** Factory-mounted cable connected to the backup heater contactor inside the switch box (K5M for \*6V and \*9W models)
- b** Field wiring (see table below)



F1B Overcurrent fuse (field supply). Recommended fuse for \*6V and \*9W models: 4-pole; 20 A; curve 400 V; tripping class C.

- K1M Contactor (in the switch box)  
 K5M Safety contactor (in the switch box)  
 Q1DI Earth leakage circuit breaker (field supply)  
 SWB Switch box  
 X6M Terminal (field supply)

## 4 Installation



### NOTICE

Do NOT cut or remove the backup heater power supply cable.

### 4.5.5 To connect the shut-off valve



### INFORMATION

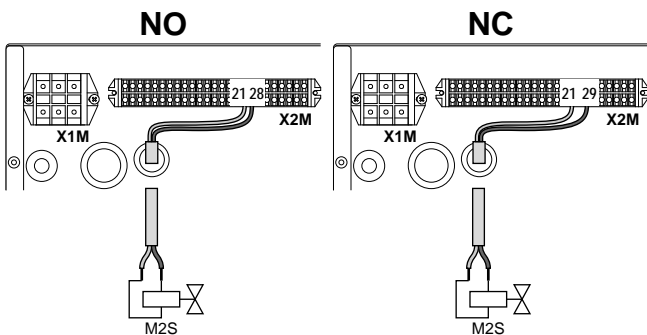
**Shut-off valve usage example.** In case of one LWT zone, and a combination of underfloor heating and heat pump convectors, install a shut-off valve before the underfloor heating to prevent condensation on the floor during cooling operation. For more information, see the installer reference guide.

- 1 Connect the valve control cable to the appropriate terminals as shown in the illustration below.



### NOTICE

Wiring is different for a NC (normally closed) valve and a NO (normally open) valve.



- 2 Fix the cable with cable ties to the cable tie mountings.

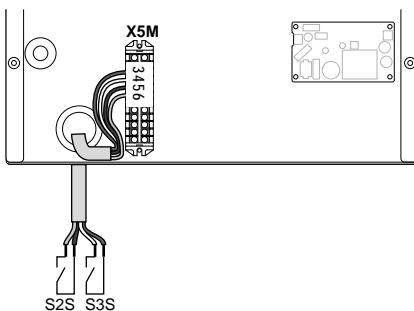
### 4.5.6 To connect the electricity meters



### INFORMATION

In case of an electricity meter with transistor output, check the polarity. The positive polarity MUST be connected to X5M/6 and X5M/4; the negative polarity to X5M/5 and X5M/3.

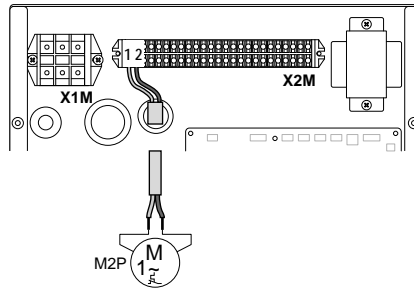
- 1 Connect the electricity meters cable to the appropriate terminals as shown in the illustration below.



- 2 Fix the cable with cable ties to the cable tie mountings.

### 4.5.7 To connect the domestic hot water pump

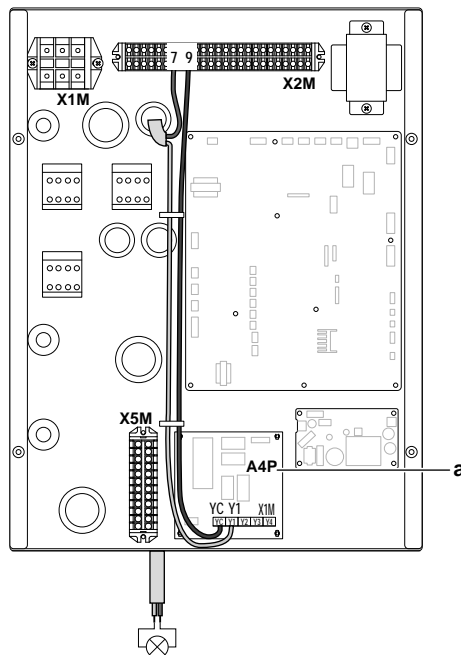
- 1 Connect the domestic hot water pump cable to the appropriate terminals as shown in the illustration below.



- 2 Fix the cable with cable ties to the cable tie mountings.

### 4.5.8 To connect the alarm output

- 1 Connect the alarm output cable to the appropriate terminals as shown in the illustration below.

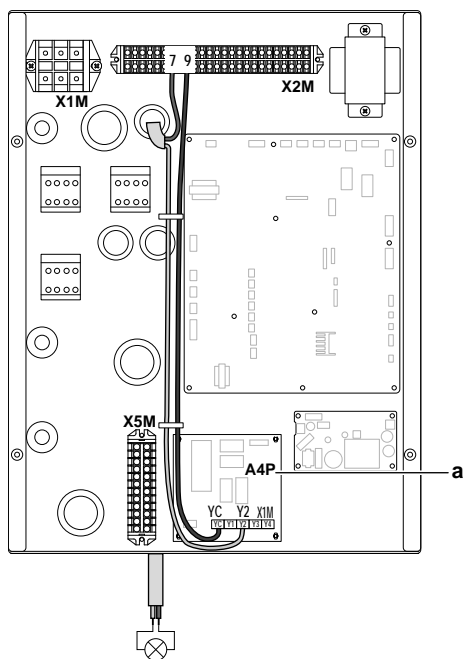


a Installation of EKRP1HBAA is required.

- 2 Fix the cable with cable ties to the cable tie mountings.

### 4.5.9 To connect the space cooling/heating ON/OFF output

- 1 Connect the space cooling/heating ON/OFF output cable to the appropriate terminals as shown in the illustration below.

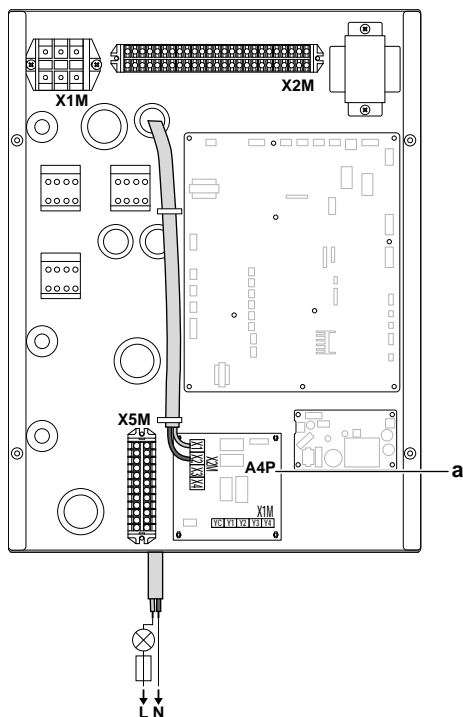


a Installation of EKR1HBAA is required.

- 2 Fix the cable with cable ties to the cable tie mountings.

### 4.5.10 To connect the changeover to external heat source

- 1 Connect the changeover to external heat source cable to the appropriate terminals as shown in the illustration below.

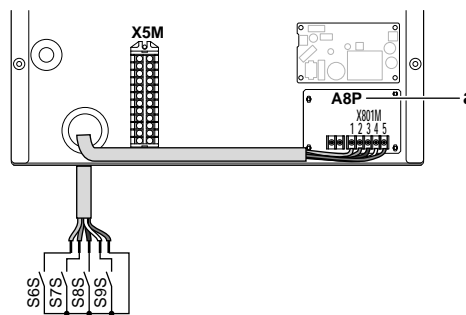


a Installation of EKR1HBAA is required.

- 2 Fix the cable with cable ties to the cable tie mountings.

### 4.5.11 To connect the power consumption digital inputs

- 1 Connect the power consumption digital inputs cable to the appropriate terminals as shown in the illustration below.

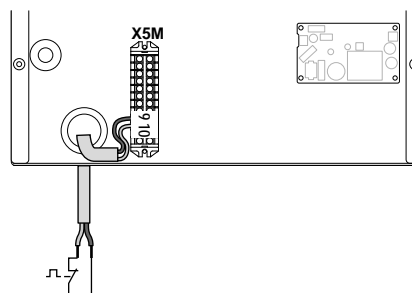


a Installation of EKR1AHTA is required.

- 2 Fix the cable with cable ties to the cable tie mountings.

### 4.5.12 To connect the safety thermostat (normally closed contact)

- 1 Connect the safety thermostat (normally closed) cable to the appropriate terminals as shown in the illustration below.



- 2 Fix the cable with cable ties to the cable tie mountings.



#### NOTICE

Make sure to select and install the safety thermostat according to the applicable legislation.

In any case, to prevent unnecessary tripping of the safety thermostat, we recommend the following:

- The safety thermostat is automatically resettable.
- The safety thermostat has a maximum temperature variation rate of 2°C/min.
- There is a minimum distance of 2 m between the safety thermostat and the motorized 3-way valve delivered with the domestic hot water tank.



#### INFORMATION

ALWAYS configure the safety thermostat after its installation. Without configuration, the indoor unit will ignore the safety thermostat contact.



#### INFORMATION

The preferential kWh rate power supply contact is connected to the same terminals (X5M/9+10) as the safety thermostat. Thus, the system can have EITHER preferential kWh rate power supply OR a safety thermostat.

## 4.6 Finishing the indoor unit installation

### 4.6.1 To close the indoor unit

- 1 Reinstall the user interface panel.
- 2 Reinstall the switch box cover and close the switch box.
- 3 Reinstall the front panel.

## 5 Configuration



### NOTICE

When closing the indoor unit cover, make sure that the tightening torque does NOT exceed 4.1 N·m.

## 5 Configuration

### 5.1 Overview: Configuration

This chapter describes what you have to do and know to configure the system after it is installed.



### NOTICE

The explanation about the configuration in this chapter gives you ONLY basic explanations. For more detailed explanation and background information, see the installer reference guide.

#### Why

If you do NOT configure the system correctly, it might NOT work as expected. The configuration influences the following:

- The calculations of the software
- What you can see on and do with the user interface

#### How

You can configure the system via the user interface.

- **First time – Configuration wizard.** When you turn ON the user interface for the first time (via the indoor unit), the configuration wizard starts to help you configure the system.
- **Restart the configuration wizard.** If the system is already configured, you can restart the configuration wizard. To restart the configuration wizard, go to Installer settings > Configuration wizard. To access Installer settings, see "5.1.1 To access the most used commands" [p 14].
- **Afterwards.** If necessary, you can make changes to the configuration in the menu structure or the overview settings.



### INFORMATION

When the configuration wizard is finished, the user interface will show an overview screen and request to confirm. When confirmed, the system will restart and the home screen will be displayed.

#### Accessing settings – Legend for tables

You can access the installer settings using two different methods. However, NOT all settings are accessible via both methods. If so, the corresponding table columns in this chapter are set to N/A (not applicable).

Method	Column in tables
Accessing settings via the breadcrumb in the <b>home menu screen</b> or the <b>menu structure</b> . To enable breadcrumbs, press the ? button in the home screen.	# For example: [9.1.5.2]
Accessing settings via the code in the <b>overview field settings</b> .	<b>Code</b> For example: [C-07]

See also:

- "To access the installer settings" [p 14]
- "5.4 Menu structure: Overview installer settings" [p 20]

#### 5.1.1 To access the most used commands

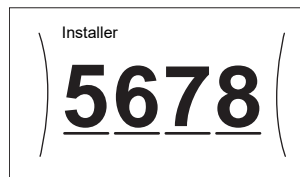
##### To change the user permission level

You can change the user permission level as follows:

1	Go to [B]: User profile.	
2	Enter the applicable pin code for the user permission level.	—
	<ul style="list-style-type: none"> <li>• Browse through the list of digits and change the selected digit.</li> <li>• Move the cursor from left to right.</li> <li>• Confirm the pin code and proceed.</li> </ul>	

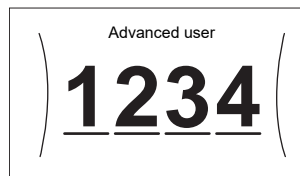
##### Installer pin code

The Installer pin code is **5678**. Additional menu items and installer settings are now available.



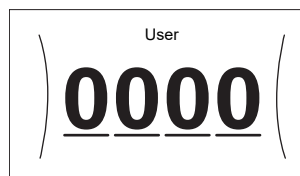
##### Advanced user pin code

The Advanced user pin code is **1234**. Additional menu items for the user are now visible.



##### User pin code

The User pin code is **0000**.



##### To access the installer settings

- 1 Set the user permission level to Installer.
- 2 Go to [9]: Installer settings.

##### To modify an overview setting

**Example:** Modify [1-01] from 15 to 20.

Most settings can be configured via the menu structure. If for any reason it is required to change a setting using the overview settings, then the overview settings can be accessed as follows:

1	Set the user permission level to Installer. See " <a href="#">To change the user permission level</a> " [p 14].	—
2	Go to [9.]: Installer settings > Overview field settings.	

3	Turn the left dial to select the first part of the setting and confirm by pressing the dial.																
	<table border="1"> <tr><td>00</td><td>05</td><td>0A</td></tr> <tr><td>0 01</td><td>06</td><td>0B</td></tr> <tr><td>1 02</td><td>07</td><td>0C</td></tr> <tr><td>2 03</td><td>08</td><td>0D</td></tr> <tr><td>3 04</td><td>09</td><td>0E</td></tr> </table>	00	05	0A	0 01	06	0B	1 02	07	0C	2 03	08	0D	3 04	09	0E	
00	05	0A															
0 01	06	0B															
1 02	07	0C															
2 03	08	0D															
3 04	09	0E															
4	Turn the left dial to select the second part of the setting																
	<table border="1"> <tr><td>00</td><td>05</td><td>0A</td></tr> <tr><td>01 15</td><td>06</td><td>0B</td></tr> <tr><td>02</td><td>07</td><td>0C</td></tr> <tr><td>03</td><td>08</td><td>0D</td></tr> <tr><td>04</td><td>09</td><td>0E</td></tr> </table>	00	05	0A	01 15	06	0B	02	07	0C	03	08	0D	04	09	0E	
00	05	0A															
01 15	06	0B															
02	07	0C															
03	08	0D															
04	09	0E															
5	Turn the right dial to modify the value from 15 to 20.																
	<table border="1"> <tr><td>00</td><td>05</td><td>0A</td></tr> <tr><td>01 20</td><td>06</td><td>0B</td></tr> <tr><td>02</td><td>07</td><td>0C</td></tr> <tr><td>03</td><td>08</td><td>0D</td></tr> <tr><td>04</td><td>09</td><td>0E</td></tr> </table>	00	05	0A	01 20	06	0B	02	07	0C	03	08	0D	04	09	0E	
00	05	0A															
01 20	06	0B															
02	07	0C															
03	08	0D															
04	09	0E															
6	Press the left dial to confirm the new setting.																
7	Press the center button to go back to the home screen.																

### INFORMATION

When you change the overview settings and you go back to the home screen, the user interface will show a popup screen and request to restart the system.

When confirmed, the system will restart and recent changes will be applied.

## 5.2 Configuration wizard

After first power ON of the system, the user interface will guide you using the configuration wizard. This way you can set the most important initial settings. This way the unit will be able to run properly. Afterwards, more detailed settings can be done via the menu structure if required.

### 5.2.1 Configuration wizard: Language

#	Code	Description
[7.1]	N/A	Language

### 5.2.2 Configuration wizard: Time and date

#	Code	Description
[7.2]	N/A	Set the local time and date

### INFORMATION

By default, daylight savings time is enabled and clock format is set to 24 hours. If you want to change these settings, you can do this in the menu structure (User settings > Time/date) once the unit is initialised.

### 5.2.3 Configuration wizard: System

#### Indoor unit type

The indoor unit type is displayed, but cannot be adjusted.

#### Backup heater type

The backup heater is adapted to be connected to most common European electricity grids. The type of backup heater must be set on the user interface. For units with a built-in backup heater, the type of heater can be viewed but not changed.

#	Code	Description
[9.3.1]	[E-03]	<ul style="list-style-type: none"> <li>2: 3V</li> <li>3: 6V</li> <li>4: 9W</li> </ul>

#### Domestic hot water

The following setting determines if the system can prepare domestic hot water or not, and which tank is used. Set this setting according to the actual installation.

#	Code	Description
[9.2.1]	[E-05] <sup>(a)</sup> [E-06] <sup>(a)</sup> [E-07] <sup>(a)</sup>	<ul style="list-style-type: none"> <li>No DHW</li> <li>No tank installed.</li> <li>EKHWS/E</li> <li>Tank with booster heater installed at the side of the tank.</li> <li>EKHWP/HYC</li> <li>Tank with optional booster heater installed at the top of the tank.</li> </ul>

<sup>(a)</sup> Use the menu structure instead of the overview settings.

Menu structure setting [9.2.1] replaces the following 3 overview settings:

- [E-05]: Can the system prepare domestic hot water?
- [E-06]: Is a domestic hot water tank installed in the system?
- [E-07]: What kind of domestic hot water tank is installed?

In case of EKHWP/HYC, we recommend to set the temperature of the booster heater NOT higher than 70°C.

In case of EKHWS\*D\* / EKHWSU\*D\*, we recommend to use the following settings:

#	Code	Item	EKHWS*D* / EKHWSU*D*	
			150/180	200/250/300
[9.2.1]	[E-07]	Tank type	0: EKHWS/E	5: EKHWP/HYC
N/A	[4-05]	Thermistor type	0: Automatic	1: Type 1
[5.8]	[6-0E]	Maximum tank temperature	≤75°C	

#### Emergency

When the heat pump fails to operate, the backup heater and/or booster heater can serve as an emergency heater and take over the heat load either automatically or by manual interaction.

- When Emergency is set to Automatic and a heat pump failure occurs:
  - the backup heater automatically takes over the heat load,
  - the booster heater in the optional tank automatically takes over the domestic hot water production.
- When Emergency is set to Manual and a heat pump failure occurs, the domestic hot water operation and space heating stops. To manually recover it via the user interface, go to the Malfunctioning main menu screen and confirm whether the backup heater and/or booster heater can take over the heat load or not.

We recommend to set Emergency to Automatic if the house is unattended for longer periods.

#	Code	Description
[9.5]	N/A	<ul style="list-style-type: none"> <li>0: Manual</li> <li>1: Automatic</li> </ul>

## 5 Configuration

### **i** INFORMATION

The auto emergency setting can be set in the menu structure of the user interface only.

### **i** INFORMATION

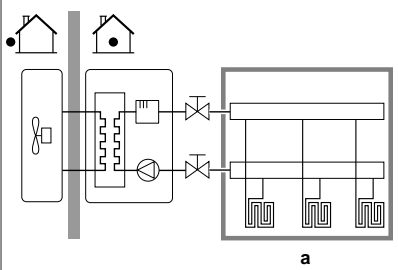
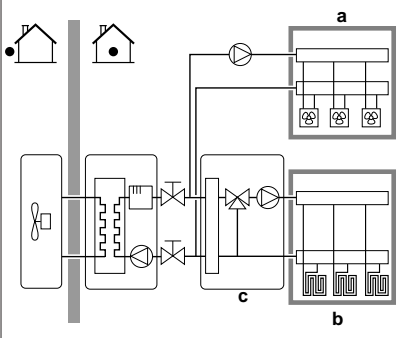
If [4-03]=1 or 3, then Emergency = Manual is not applicable for the booster heater.

### **i** INFORMATION

If a heat pump failure occurs and Emergency is set to Manual, the room frost protection function, the underfloor heating screed dryout function, and the water pipe antifreeze function will remain active even if the user does NOT confirm emergency operation.

#### Number of zones

The system can supply leaving water to up to 2 water temperature zones. During configuration, the number of water zones must be set.

#	Code	Description
[4.4]	[7-02]	<ul style="list-style-type: none"> <li>0: Single zone</li> </ul> <p>Only one leaving water temperature zone:</p>  <p><b>a</b> Main LWT zone</p>
[4.4]	[7-02]	<ul style="list-style-type: none"> <li>1: Dual zone</li> </ul> <p>Two leaving water temperature zones. The main leaving water temperature zone consists of the higher load heat emitters and a mixing station to achieve the desired leaving water temperature. In heating:</p>  <p><b>a</b> Additional LWT zone: Highest temperature <b>b</b> Main LWT zone: Lowest temperature <b>c</b> Mixing station</p>

### **!** CAUTION

NOT configuring the system in the following way can cause damage to the heat emitters. If there are 2 zones, it is important that in heating:

- the zone with the lowest water temperature is configured as the main zone, and
- the zone with the highest water temperature is configured as the additional zone.

### **!** CAUTION

If there are 2 zones and the emitter types are wrongly configured, water of high temperature can be sent towards a low temperature emitter (underfloor heating). To avoid this:

- Install an aquastat/thermostatic valve to avoid too high temperatures towards a low temperature emitter.
- Make sure you set the emitter types for the main zone [2.7] and for the additional zone [3.7] correctly in accordance with the connected emitter.

### **!** NOTICE

An overpressure bypass valve can be integrated in the system. Keep in mind that this valve might not be shown on the illustrations.

### 5.2.4 Configuration wizard: Backup heater

The backup heater is adapted to be connected to most common European electricity grids. If the backup heater is available, the voltage, configuration and capacity must be set on the user interface.

The capacities for the different steps of the backup heater must be set for the energy metering and/or power consumption control feature to work properly. When measuring the resistance value of each heater, you can set the exact heater capacity and this will lead to more accurate energy data.

#### Voltage

- For a 3V model, this is fixed to 230V, 1ph.
- For a 6V model, this can be set to:
  - 230V, 1ph
  - 230V, 3ph
- For a 9V model, this is fixed to 400V, 3ph.

#	Code	Description
[9.3.2]	[5-0D]	<ul style="list-style-type: none"> <li>0: 230V, 1ph</li> <li>1: 230V, 3ph</li> <li>2: 400V, 3ph</li> </ul>

#### Configuration

The backup heater can be configured in different ways. It can be chosen to have a 1-step only backup heater or a backup heater with 2 steps. If 2 steps, the capacity of the second step depends on this setting. It can also be chosen to have a higher capacity of the second step in emergency.

#	Code	Description
[9.3.3]	[4-0A]	<ul style="list-style-type: none"> <li>0: Relay 1</li> <li>1: Relay 1 / Relay 1+2<sup>(a)</sup></li> <li>2: Relay 1 / Relay 2<sup>(a)</sup></li> <li>3: Relay 1 / Relay 2 Emergency Relay 1+2<sup>(a)</sup></li> </ul>

(a) Not available for 3V models.

### **i** INFORMATION

Settings [9.3.3] and [9.3.5] are linked. Changing one setting influences the other. If you change one, check if the other is still as expected.

### **i** INFORMATION

During normal operation, the capacity of the second step of the backup heater at nominal voltage is equal to [6-03]+[6-04].

**INFORMATION**

If [4-0A]=3 and emergency mode is active, the power usage of the backup heater is maximal and equal to  $2 \times [6-03] + [6-04]$ .

**Capacity step 1**

#	Code	Description
[9.3.4]	[6-03]	▪ The capacity of the first step of the backup heater at nominal voltage.

**Additional capacity step 2**

#	Code	Description
[9.3.5]	[6-04]	▪ The capacity difference between the second and first step of the backup heater at nominal voltage. Nominal value depends on backup heater configuration.

**5.2.5 Configuration wizard: Main zone**

The most important settings for the main leaving water zone can be set here.

**Emitter type**

Heating up or cooling down the main zone can take longer. This depends on:

- The water volume of the system
- The heater emitter type of the main zone

The setting **Emitter type** can compensate for a slow or a quick heating/cooling system during the heat up/cool down cycle. In room thermostat control, **Emitter type** influences the maximum modulation of the desired leaving water temperature, and the possibility for usage of the automatic cooling/heating changeover based on the indoor ambient temperature.

It is important to set **Emitter type** correctly and in accordance with your system layout. The target delta T for the main zone depends on it.

#	Code	Description
[2.7]	[2-0C]	<ul style="list-style-type: none"> <li>▪ 0: Underfloor heating</li> <li>▪ 1: Fancoil unit</li> <li>▪ 2: Radiator</li> </ul>

The setting of the emitter type has an influence on the space heating setpoint range and the target delta T in heating as follows:

Description	Space heating setpoint range	Target delta T in heating
0: Underfloor heating	Maximum 55°C	Variable
1: Fancoil unit	Maximum 55°C	Variable
2: Radiator	Maximum 65°C	Fixed 10°C

**NOTICE**

For radiators, the average emitter temperature will be lower compared to underfloor heating, due to the fixed delta T of 10°C. To compensate, you can:

- Increase the weather dependent curve desired temperatures [2.5].
- Enable leaving water temperature modulation and increase the maximum modulation [2.C].

**Control**

Define how the operation of the unit is controlled.

Control	In this control...
Leaving water	Unit operation is decided based on the leaving water temperature regardless the actual room temperature and/or heating or cooling demand of the room.
External room thermostat	Unit operation is decided by the external thermostat or equivalent (e.g. heat pump convector).
Room thermostat	Unit operation is decided based on the ambient temperature of the user interface used as a room thermostat.

#	Code	Description
[2.9]	[C-07]	<ul style="list-style-type: none"> <li>▪ 0: Leaving water</li> <li>▪ 1: External room thermostat</li> <li>▪ 2: Room thermostat</li> </ul>

**Setpoint mode**

Define the setpoint mode:

- **Fixed:** the desired leaving water temperature does not depend on the outdoor ambient temperature.
- **In WD heating, fixed cooling mode,** the desired leaving water temperature:
  - depends on the outdoor ambient temperature for heating
  - does NOT depend on the outdoor ambient temperature for cooling
- **In Weather dependent mode,** the desired leaving water temperature depends on the outdoor ambient temperature.

#	Code	Description
[2.4]	N/A	Setpoint mode <ul style="list-style-type: none"> <li>▪ Fixed</li> <li>▪ WD heating, fixed cooling</li> <li>▪ Weather dependent</li> </ul>

When weather dependent operation is active, low outdoor temperatures will result in warmer water and vice versa. During weather dependent operation, the user can shift the water temperature up or down by a maximum of 10°C.

**Schedule**

Indicates if the desired leaving water temperature is according to a schedule. Influence of the LWT setpoint mode [2.4] is as follows:

- In **Fixed** LWT setpoint mode, the scheduled actions consist of desired leaving water temperatures, either preset or custom.
- In **Weather dependent** LWT setpoint mode, the scheduled actions consist of desired shift actions, either preset or custom.

#	Code	Description
[2.1]	N/A	<ul style="list-style-type: none"> <li>▪ 0: No</li> <li>▪ 1: Yes</li> </ul>

**5.2.6 Configuration wizard: Additional zone**

The most important settings for the additional leaving water zone can be set here.

**Emitter type**

For more info about this functionality, see ["5.2.5 Configuration wizard: Main zone" ▸ 17](#).

#	Code	Description
[3.7]	[2-0D]	<ul style="list-style-type: none"> <li>▪ 0: Underfloor heating</li> <li>▪ 1: Fancoil unit</li> <li>▪ 2: Radiator</li> </ul>

## 5 Configuration

### Control

The control type is displayed here, but cannot be adjusted. It is determined by the control type of the main zone. For more info about the functionality, see "5.2.5 Configuration wizard: Main zone" [▶ 17].

#	Code	Description
[3.9]	N/A	<ul style="list-style-type: none"> <li>0: Leaving water if the control type of the main zone is Leaving water.</li> <li>1: External room thermostat if the control type of the main zone is External room thermostat or Room thermostat.</li> </ul>

### Setpoint mode

For more info about this functionality, see "5.2.5 Configuration wizard: Main zone" [▶ 17].

#	Code	Description
[3.4]	N/A	<ul style="list-style-type: none"> <li>0: Fixed</li> <li>1: WD heating, fixed cooling</li> <li>2: Weather dependent</li> </ul>

If you choose WD heating, fixed cooling or Weather dependent, the next screen will be the detailed screen with weather-dependent curves. Also see "5.2.7 Detailed screen with weather-dependent curve" [▶ 18].

### Schedule

Indicates if the desired leaving water temperature is according to a schedule. Also see "5.2.5 Configuration wizard: Main zone" [▶ 17].

#	Code	Description
[3.1]	N/A	<ul style="list-style-type: none"> <li>0: No</li> <li>1: Yes</li> </ul>

### 5.2.7 Detailed screen with weather-dependent curve

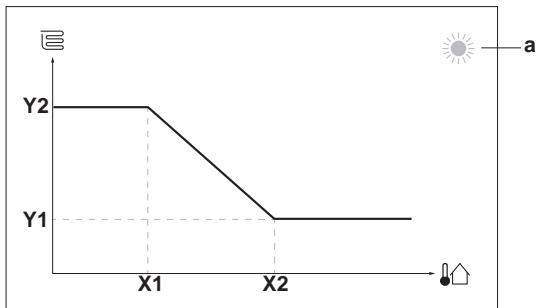
When weather-dependent (WD) operation is active the desired leaving water or tank temperature is determined automatically depending on the averaged outdoor temperature. When the outdoor temperature is lower the leaving water or tank temperature will need to be higher as the water pipes will be colder and vice versa.

#### 2-points WD curve

The weather-dependent curve is defined by two setpoints:

- Setpoint (X1, Y2)
- Setpoint (X2, Y1)

Weather-dependent curve:



Possible actions on this screen	
	Go through the temperatures.
	Change the temperature.
	Go to the next temperature.
	Confirm changes and proceed.

Item	Description
<b>a</b>	Selected weather dependent zone: <ul style="list-style-type: none"> <li>: Main zone or additional zone heating</li> <li>: Main zone or additional zone cooling</li> <li>: Domestic hot water</li> </ul>
<b>X1, X2</b>	Examples of outdoor ambient temperature
<b>Y1, Y2</b>	Examples of desired tank temperature or leaving water temperature. The icon corresponds to the heat emitter for that zone: <ul style="list-style-type: none"> <li>: Underfloor heating</li> <li>: Fan coil unit</li> <li>: Radiator</li> <li>: Domestic hot water tank</li> </ul>

### 5.2.8 Configuration wizard: Tank

This part only applies to systems with an optional domestic hot water tank installed.

#### Heat up mode

The domestic hot water can be prepared in 3 different ways. They differ from each other by the way the desired tank temperature is set and how the unit acts upon it.

#	Code	Description
[5.6]	[6-0D]	Heat up mode <ul style="list-style-type: none"> <li>0: Reheat only: Only reheat operation is allowed.</li> <li>1: Schedule + reheat: The domestic hot water tank is heated according to a schedule and between the scheduled heat up cycles, reheat operation is allowed.</li> <li>2: Schedule only: The domestic hot water tank can ONLY be heated according to a schedule.</li> </ul>

See the operation manual for more details.



#### INFORMATION

Risk of space heating capacity shortage for domestic hot water tank without internal booster heater: In case of frequent domestic hot water operation, frequent and long space heating/cooling interruption will happen when selecting the following:

Tank > Heat up mode > Reheat only.

#### Comfort setpoint

Only applicable when domestic hot water preparation is Schedule only or Schedule + reheat. When programming the schedule, you can make use of the comfort setpoint as a preset value. When you later want to change the storage setpoint, you only have to do it in one place.

The tank will heat up until the **storage comfort temperature** has been reached. It is the higher desired temperature when a storage comfort action is scheduled.

Additionally, a storage stop can be programmed. This feature puts a stop to tank heating even if the setpoint has NOT been reached. Only program a storage stop when tank heating is absolutely undesirable.

#	Code	Description
[5.2]	[6-0A]	Comfort setpoint ▪ 30°C~[6-0E]°C

**Eco setpoint**

The **storage economic temperature** denotes the lower desired tank temperature. It is the desired temperature when a storage economic action is scheduled (preferably during day).

#	Code	Description
[5.3]	[6-0B]	Eco setpoint ▪ 30°C~min(50,[6-0E])°C

**Reheat setpoint**

**Desired reheat tank temperature**, used:

- in Schedule + reheat mode, during reheat mode: the guaranteed minimum tank temperature is set by the Reheat setpoint minus the reheat hysteresis. If the tank temperature drops below this value, the tank is heated up.
- during storage comfort, to prioritize the domestic hot water preparation. When the tank temperature rises above this value, domestic hot water preparation and space heating/cooling are executed sequentially.

#	Code	Description
[5.4]	[6-0C]	Reheat setpoint ▪ 30°C~min(50,[6-0E])°C

## 5.3 Settings menu

You can set additional settings using the main menu screen and its submenus. The most important settings are presented here.

### 5.3.1 Main zone

**Thermostat type**

Only applicable in external room thermostat control.

**NOTICE**

If an external room thermostat is used, the external room thermostat will control the room frost protection. However, the room frost protection is only possible if [C.2] Space heating/cooling=0n.

#	Code	Description
[2.A]	[C-05]	External room thermostat type for the main zone: ▪ 1: 1 contact: The used external room thermostat can only send a thermo ON/OFF condition. There is no separation between heating or cooling demand. ▪ 2: 2 contacts: The used external room thermostat can send a separate heating/cooling thermo ON/OFF condition.

### 5.3.2 Additional zone

**Thermostat type**

Only applicable in external room thermostat control. For more info about the functionality, see "5.3.1 Main zone" [p 19].

#	Code	Description
[3.A]	[C-06]	External room thermostat type for the additional zone: ▪ 1: 1 contact ▪ 2: 2 contacts

### 5.3.3 Information

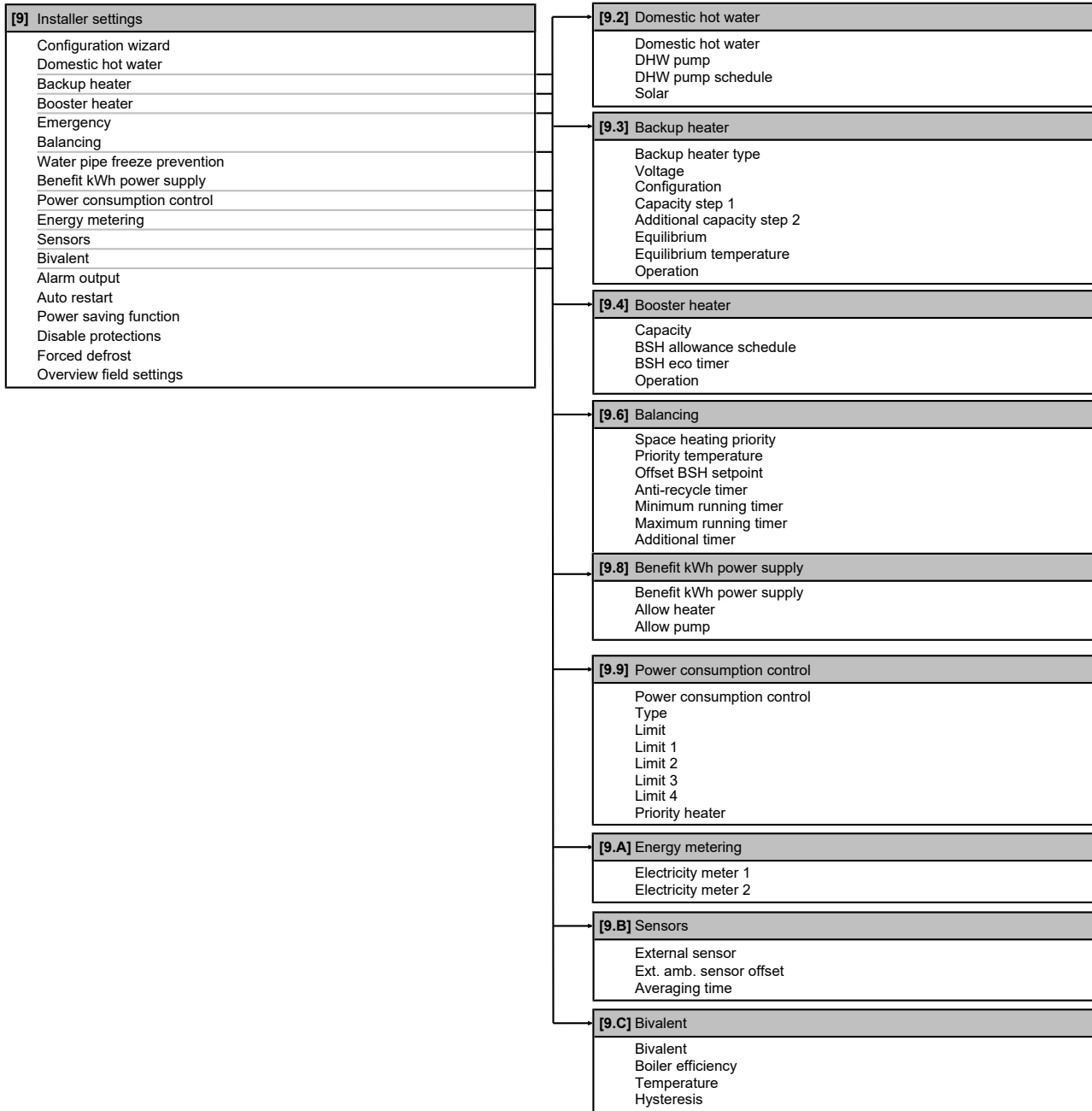
**Dealer information**

The installer can fill in his contact number here.

#	Code	Description
[8.3]	N/A	Number that users can call in case of problems.

## 5 Configuration

### 5.4 Menu structure: Overview installer settings



#### INFORMATION

Solar kit settings are shown but are NOT applicable for this unit. Settings shall NOT be used or changed.



#### INFORMATION

Depending on the selected installer settings and unit type, settings will be visible/invisible.

## 6 Commissioning



### NOTICE

ALWAYS operate the unit with thermistors and/or pressure sensors/switches. If NOT, burning of the compressor might be the result.



### INFORMATION

**Protective functions – "Installer-on-site mode".** The software is equipped with protective functions, such as room antifrost. The unit automatically runs these functions when necessary.

During installation or service this behaviour is undesired. Therefore, the protective functions can be disabled:

- **At first power-on:** The protective functions are disabled by default. After 36 h they will be automatically enabled.
- **Afterwards:** An installer can manually disable the protective functions by setting [9.G]: Disable protections=Yes. After his work is done, he can enable the protective functions by setting [9.G]: Disable protections=No.

### 6.1 Checklist before commissioning

After the installation of the unit, first check the items listed below. Once all checks are fulfilled, the unit must be closed. Power-up the unit after it is closed.

<input type="checkbox"/>	You read the complete installation instructions, as described in the <b>installer reference guide</b> .
<input type="checkbox"/>	The <b>indoor unit</b> is properly mounted.
<input type="checkbox"/>	The <b>outdoor unit</b> is properly mounted.
<input type="checkbox"/>	The following <b>field wiring</b> has been carried out according to this document and the applicable legislation: <ul style="list-style-type: none"> <li>▪ Between the local supply panel and the outdoor unit</li> <li>▪ Between indoor unit and outdoor unit</li> <li>▪ Between the local supply panel and the indoor unit</li> <li>▪ Between the indoor unit and the valves (if applicable)</li> <li>▪ Between the indoor unit and the room thermostat (if applicable)</li> <li>▪ Between the indoor unit and the domestic hot water tank (if applicable)</li> </ul>
<input type="checkbox"/>	The system is properly <b>earthed</b> and the earth terminals are tightened.
<input type="checkbox"/>	The <b>fuses</b> or locally installed protection devices are installed according to this document, and have NOT been bypassed.
<input type="checkbox"/>	The <b>power supply voltage</b> matches the voltage on the identification label of the unit.
<input type="checkbox"/>	There are NO <b>loose connections</b> or damaged electrical components in the switch box.
<input type="checkbox"/>	There are NO <b>damaged components</b> or <b>squeezed pipes</b> on the inside of the indoor and outdoor units.
<input type="checkbox"/>	<b>Backup heater circuit breaker</b> F1B (field supply) is turned ON.
<input type="checkbox"/>	Only for tanks with built-in booster heater: <b>Booster heater circuit breaker</b> F2B (field supply) is turned ON.
<input type="checkbox"/>	There are NO <b>refrigerant leaks</b> .

<input type="checkbox"/>	The <b>refrigerant pipes</b> (gas and liquid) are thermally insulated.
<input type="checkbox"/>	The correct pipe size is installed and the <b>pipes</b> are properly insulated.
<input type="checkbox"/>	There is NO <b>water leak</b> inside the indoor unit.
<input type="checkbox"/>	The <b>shut-off valves</b> are properly installed and fully open.
<input type="checkbox"/>	The <b>stop valves</b> (gas and liquid) on the outdoor unit are fully open.
<input type="checkbox"/>	The <b>air purge</b> valve is open (at least 2 turns).
<input type="checkbox"/>	The <b>pressure relief valve</b> purges water when opened. Clean water must come out.
<input type="checkbox"/>	The <b>minimum water volume</b> is guaranteed in all conditions. See "To check the water volume" in <a href="#">"3.2 Preparing water piping"</a> [▶ 6].
<input type="checkbox"/>	(if applicable) The <b>domestic hot water tank</b> is filled completely.

### 6.2 Checklist during commissioning

<input type="checkbox"/>	The <b>minimum flow rate</b> during backup heater/defrost operation is guaranteed in all conditions. See "To check the water volume and flow rate" in <a href="#">"3.2 Preparing water piping"</a> [▶ 6].
<input type="checkbox"/>	To perform an <b>air purge</b> .
<input type="checkbox"/>	To perform a <b>test run</b> .
<input type="checkbox"/>	To perform an <b>actuator test run</b> .
<input type="checkbox"/>	<b>Underfloor screed dryout function</b> The underfloor screed dryout function is started (if necessary).

#### 6.2.1 To check the minimum flow rate

1	Check the hydraulic configuration to find out which space heating loops can be closed by mechanical, electronic, or other valves.	—
2	Close all space heating loops that can be closed.	—
3	Start the pump test run (see <a href="#">"6.2.4 To perform an actuator test run"</a> [▶ 22]).	—
4	Read out the flow rate <sup>(a)</sup> and modify the bypass valve setting to reach the minimum required flow rate + 2 l/min.	—

<sup>(a)</sup> During pump test run, the unit can operate below the minimum required flow rate.

<b>Minimum required flow rate</b>
12 l/min

#### 6.2.2 To perform an air purge

**Conditions:** Make sure all operation is disabled. Go to [C]: Operation and turn off Room, Space heating/cooling and Tank operation.

## 6 Commissioning

1	Set the user permission level to Installer. See " <a href="#">To change the user permission level</a> " ▶ 14].	—
2	Go to [A.3]: Commissioning > Air purge.	
3	Select OK to confirm. <b>Result:</b> The air purge starts. It stops automatically when air purge cycle is finished.	
	To stop the air purge manually:	—
1	Go to Stop air purge.	
2	Select OK to confirm.	

### Air purging heat emitters or collectors

We recommend to purge air with the unit's air purge function (see above). However, if you purge air from the heat emitters or collectors, mind the following:



#### WARNING

**Air purging heat emitters or collectors.** Before you purge air from heat emitters or collectors, check if or is displayed on the home screen of the user interface.

- If not, you can purge air immediately.
- If yes, make sure that the room where you want to purge air is sufficiently ventilated. **Reason:** Refrigerant might leak into the water circuit, and subsequently into the room when you purge air from the heat emitters or collectors.

### 6.2.3 To perform an operation test run

**Conditions:** Make sure all operation is disabled. Go to [C]: Operation and turn off Room, Space heating/cooling and Tank operation.

1	Set the user permission level to Installer. See " <a href="#">To change the user permission level</a> " ▶ 14].	—
2	Go to [A.1]: Commissioning > Operation test run.	
3	Select a test from the list. <b>Example:</b> Heating.	
4	Select OK to confirm. <b>Result:</b> The test run starts. It stops automatically when ready (±30 min).	
	To stop the test run manually:	—
1	In the menu, go to Stop test run.	
2	Select OK to confirm.	



#### INFORMATION

If the outdoor temperature is outside the range of operation, the unit may NOT operate or may NOT deliver the required capacity.

### To monitor leaving water and tank temperatures

During test run, the correct operation of the unit can be checked by monitoring its leaving water temperature (heating/cooling mode) and tank temperature (domestic hot water mode).

To monitor the temperatures:

1	In the menu, go to Sensors.	
2	Select the temperature information.	

### 6.2.4 To perform an actuator test run

**Conditions:** Make sure all operation is disabled. Go to [C]: Operation and turn off Room, Space heating/cooling and Tank operation.

#### Purpose

Perform an actuator test run to confirm the operation of the different actuators. For example, when you select Pump, a test run of the pump will start.

1	Set the user permission level to Installer. See " <a href="#">To change the user permission level</a> " ▶ 14].	—
2	Go to [A.2]: Commissioning > Actuator test run.	
3	Select a test from the list. <b>Example:</b> Pump.	
4	Select OK to confirm. <b>Result:</b> The actuator test run starts. It stops automatically when ready (±30 min).	
	To stop the test run manually:	—
1	In the menu, go to Stop test run.	
2	Select OK to confirm.	

#### Possible actuator test runs

- Booster heater test
- Backup heater 1 test
- Backup heater 2 test
- Pump test



#### INFORMATION

Make sure that all air is purged before executing the test run. Also avoid disturbances in the water circuit during the test run.

- Shut off valve test
- Diverter valve test (3-way valve for switching between space heating and tank heating)
- Bivalent signal test
- Alarm output test
- C/H signal test
- DHW pump test

### 6.2.5 To perform an underfloor heating screed dryout

**Conditions:** Make sure all operation is disabled. Go to [C]: Operation and turn off Room, Space heating/cooling and Tank operation.

1	Set the user permission level to Installer. See " <a href="#">To change the user permission level</a> " ▶ 14].	—
2	Go to [A.4]: Commissioning > UFH screed dryout.	
3	Set a dryout program: go to Program and use the UFH screed dryout programming screen.	
4	Select OK to confirm. <b>Result:</b> The underfloor heating screed dryout starts. It stops automatically when done.	
	To stop the test run manually:	—
1	Go to Stop UFH screed dryout.	
2	Select OK to confirm.	



### NOTICE

To perform an underfloor heating screed dryout, room frost protection needs to be disabled ([2-06]=0). By default, it is enabled ([2-06]=1). However, due to the "installer-on-site" mode (see "Commissioning"), room frost protection will be automatically disabled for 36 hours after the first power-on.

If the screed dryout still needs to be performed after the first 36 hours of power-on, manually disable room frost protection by setting [2-06] to "0", and KEEP it disabled until the screed dryout has finished. Ignoring this notice will result in cracking of the screed.

---



### NOTICE

For the underfloor heating screed dryout to be able to start, make sure the following settings are met:

- [4-00]=1
  - [C-02]=0
  - [D-01]=0
  - [4-08]=0
  - [4-01]≠1
- 

## 7 Hand-over to the user

Once the test run is finished and the unit operates properly, please make sure the following is clear for the user:

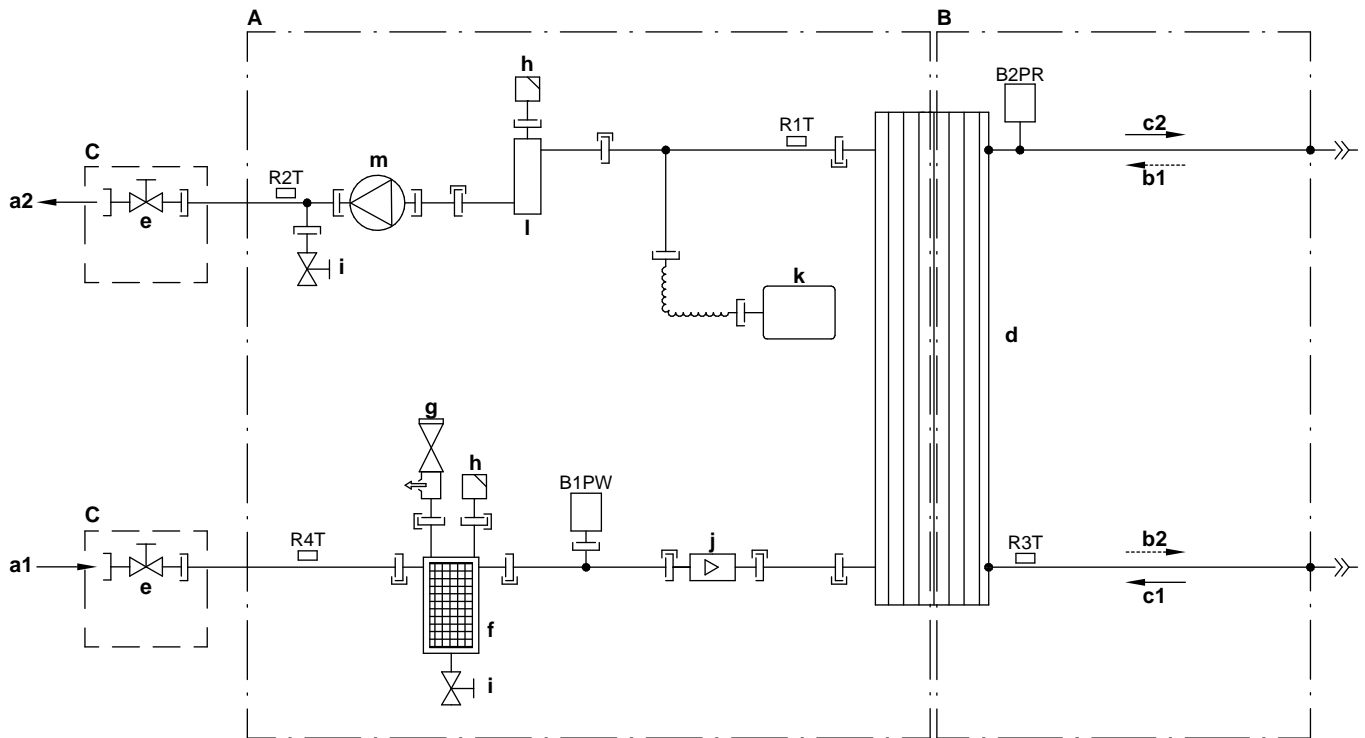
- Fill in the installer setting table (in the operation manual) with the actual settings.
- Make sure that the user has the printed documentation and ask him/her to keep it for future reference. Inform the user that he can find the complete documentation at the URL mentioned earlier in this manual.
- Explain the user how to properly operate the system and what to do in case of problems.
- Show the user what to do for the maintenance of the unit.
- Explain the user about energy saving tips as described in the operation manual.

## 8 Technical data

### 8 Technical data

A **subset** of the latest technical data is available on the regional Daikin website (publicly accessible). The **full set** of latest technical data is available on the Daikin Business Portal (authentication required).

#### 8.1 Piping diagram: Indoor unit



3D111541A

- |           |  |             |   |
|-----------|--|-------------|---|
| <b>A</b>  | Water side                                       | <b>B1PW</b> | Space heating water pressure sensor     |
| <b>B</b>  | Refrigerant side                                 | <b>B2PR</b> | Refrigerant pressure sensor             |
| <b>C</b>  | Field installed                                  | <b>R1T</b>  | Thermistor (heat exchanger – water OUT) |
| <b>a1</b> | Space heating water IN                           | <b>R2T</b>  | Thermistor (backup heater – water OUT)  |
| <b>a2</b> | Space heating water OUT                          | <b>R3T</b>  | Thermistor (liquid refrigerant)         |
| <b>b1</b> | Gas refrigerant IN (heating mode; condenser)     | <b>R4T</b>  | Thermistor (heat exchanger – water IN)  |
| <b>b2</b> | Liquid refrigerant OUT (heating mode; condenser) | —           | Screw connection                        |
| <b>c1</b> | Liquid refrigerant IN (cooling mode; evaporator) | —           | Flare connection                        |
| <b>c2</b> | Gas refrigerant OUT (cooling mode; evaporator)   | —           | Quick coupling                          |
| <b>d</b>  | Plate heat exchanger                             | —           | Brazed connection                       |
| <b>e</b>  | Shut-off valve for service                       |             |   |
| <b>f</b>  | Magnetic filter/dirt separator                   |             |   |
| <b>g</b>  | Safety valve                                     |             |   |
| <b>h</b>  | Air purge  |             |   |
| <b>i</b>  | Drain valve                                      |             |   |
| <b>j</b>  | Flow sensor                                      |             |   |
| <b>k</b>  | Expansion vessel                                 |             |   |
| <b>l</b>  | Backup heater                                    |             |   |
| <b>m</b>  | Pump   |             |   |

## 8.2 Wiring diagram: Indoor unit

See the internal wiring diagram supplied with the unit (on the inside of the indoor unit upper front panel). The abbreviations used are listed below.

### Notes to go through before starting the unit

English	Translation
Notes to go through before starting the unit	Notes to go through before starting the unit
X1M	Main terminal
X2M	Field wiring terminal for AC
X5M	Field wiring terminal for DC
X6M	Backup heater power supply terminal
X7M, X8M	Booster heater power supply terminal
-----	Earth wiring
-----	Field supply
①	Several wiring possibilities
	Option
	Not mounted in switch box
	Wiring depending on model
	PCB
Note 1: Connection point of the power supply for the BUH/BSH should be foreseen outside the unit.	Note 1: Connection point of the power supply for the backup heater/booster heater should be foreseen outside the unit.
<b>Backup heater power supply</b>	<b>Backup heater power supply</b>
<input type="checkbox"/> 1N~, 230 V	<input type="checkbox"/> 1N~, 230 V
<input type="checkbox"/> 3~, 230 V	<input type="checkbox"/> 3~, 230 V
<input type="checkbox"/> 3N~, 400 V	<input type="checkbox"/> 3N~, 400 V
<b>User installed options</b>	<b>User installed options</b>
<input type="checkbox"/> LAN adapter	<input type="checkbox"/> LAN adapter
<input type="checkbox"/> Domestic hot water tank	<input type="checkbox"/> Domestic hot water tank
<input type="checkbox"/> Remote user interface	<input type="checkbox"/> User interface used as room thermostat
<input type="checkbox"/> Ext. indoor thermistor	<input type="checkbox"/> External indoor thermistor
<input type="checkbox"/> Ext outdoor thermistor	<input type="checkbox"/> External outdoor thermistor
<input type="checkbox"/> Digital I/O PCB	<input type="checkbox"/> Digital I/O PCB
<input type="checkbox"/> Demand PCB	<input type="checkbox"/> Demand PCB
<b>Main LWT</b>	<b>Main leaving water temperature</b>
<input type="checkbox"/> On/OFF thermostat (wired)	<input type="checkbox"/> On/OFF thermostat (wired)
<input type="checkbox"/> On/OFF thermostat (wireless)	<input type="checkbox"/> On/OFF thermostat (wireless)
<input type="checkbox"/> Ext. thermistor	<input type="checkbox"/> External thermistor
<input type="checkbox"/> Heat pump convector	<input type="checkbox"/> Heat pump convector
<b>Add LWT</b>	<b>Additional leaving water temperature</b>
<input type="checkbox"/> On/OFF thermostat (wired)	<input type="checkbox"/> On/OFF thermostat (wired)
<input type="checkbox"/> On/OFF thermostat (wireless)	<input type="checkbox"/> On/OFF thermostat (wireless)
<input type="checkbox"/> Ext. thermistor	<input type="checkbox"/> External thermistor
<input type="checkbox"/> Heat pump convector	<input type="checkbox"/> Heat pump convector

### Position in switch box

English	Translation
Position in switch box	Position in switch box

### Legend

A1P	Main PCB
A2P	* On/OFF thermostat (PC=power circuit)

A3P	* Heat pump convector
A4P	* Digital I/O PCB
A8P	* Demand PCB
A9P	Status indicator
A10P	MMI (= user interface connected to the indoor unit) – Power supply unit PCB
A11P	MMI (= user interface connected to the indoor unit) – Main PCB
A12P	MMI display PCB
A13P	* LAN adapter
A14P	* User interface used as room thermostat – PCB
A15P	* Receiver PCB (wireless On/OFF thermostat)
B1L	Flow sensor
B1PR	Refrigerant pressure sensor
B1PW	Water pressure sensor
BSK (A3P)	Solar pump station relay
CN* (A4P)	* Connector
DS1(A8P)	* DIP switch
E1H	Backup heater element (1 kW)
E2H	Backup heater element (2 kW)
E3H	Backup heater element (3 kW)
E4H	* Booster heater (3 kW)
E*P (A9P)	Indication LED
F1B	# Overcurrent fuse backup heater
F2B	# Overcurrent fuse booster heater
F1T	Thermal fuse backup heater
F1U, F2U (A4P)	* Fuse 5 A 250 V for digital I/O PCB
FU1 (A1P)	Fuse T 5 A 250 V for PCB
FU2 (A10P)	Fuse T 1.6 A 250 V for PCB
K1M, K2M	Contactorp backup heater
K3M	* Contactorp booster heater
K5M	Safety contactorp backup heater
K*R (A1P-A4P)	Relay on PCB
M1P	Main supply pump
M2P	# Domestic hot water pump
M2S	# 2-way valve for cooling mode
M3S	* 3-way valve for floor heating/domestic hot water
P1M	MMI display
PC (A15P)	* Power circuit
PHC1 (A4P)	* Optocoupler input circuit
Q1L	Thermal protector backup heater
Q2L	* Thermal protector booster heater
Q4L	# Safety thermostat
Q*DI	# Earth leakage circuit breaker
R1H (A2P)	* Humidity sensor
R1T (A1P)	Outlet water heat exchanger thermistor
R1T (A2P)	* Ambient sensor On/OFF thermostat
R1T (A14P)	* Ambient sensor user interface
R2T (A1P)	Outlet backup heater thermistor
R2T (A2P)	* External sensor (floor or ambient)

## 8 Technical data

R3T		Refrigerant liquid side thermistor
R4T		Inlet water thermistor
R5T	*	Domestic hot water thermistor
R6T	*	External indoor or outdoor ambient thermistor
S1S	#	Preferential kWh rate power supply contact
S2S	#	Electrical meter pulse input 1
S3S	#	Electrical meter pulse input 2
S6S~S9S	*	Digital power limitation inputs
SS1 (A4P)	*	Selector switch
SW1~2 (A12P)		Turn buttons
SW3~5 (A12P)		Push buttons
TR1		Power supply transformer
X6M	#	Backup heater power supply terminal strip
X7M, X8M		Booster heater power supply terminal strip
X*, X*A, X*Y, Y*		Connector
X*M		Terminal strip

- \* Optional  
# Field supply

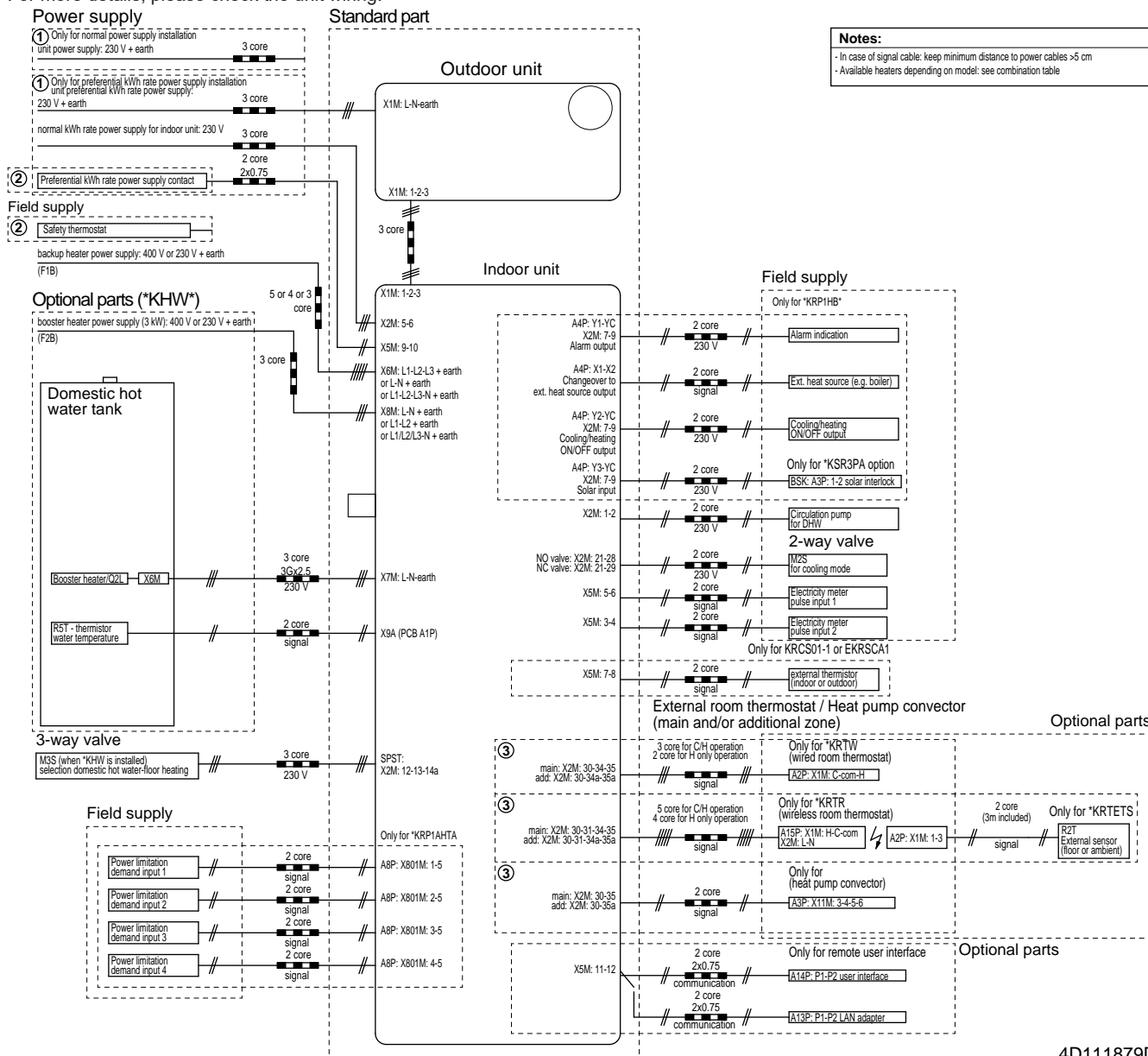
### Translation of text on wiring diagram

English	Translation
<b>(1) Main power connection</b>	<b>(1) Main power connection</b>
For preferential kWh rate power supply	For preferential kWh rate power supply
Indoor unit supplied from outdoor	Indoor unit supplied from outdoor
Normal kWh rate power supply	Normal kWh rate power supply
Only for normal power supply (standard)	Only for normal power supply (standard)
Only for preferential kWh rate power supply (outdoor)	Only for preferential kWh rate power supply (outdoor)
Outdoor unit	Outdoor unit
Preferential kWh rate power supply contact: 16 V DC detection (voltage supplied by PCB)	Preferential kWh rate power supply contact: 16 V DC detection (voltage supplied by PCB)
SWB	Switch box
Use normal kWh rate power supply for indoor unit	Use normal kWh rate power supply for indoor unit
<b>(2) Backup heater power supply</b>	<b>(2) Backup heater power supply</b>
Only for ***	Only for ***
<b>(3) User interface</b>	<b>(3) User interface</b>
Only for LAN adapter	Only for the LAN adapter
Only for remote user interface	Only for the user interface used as room thermostat
<b>(4) Domestic hot water tank</b>	<b>(4) Domestic hot water tank</b>
3 wire type SPST	3 wire type SPST
Booster heater power supply	Booster heater power supply
Only for ***	Only for ***
SWB	Switch box
<b>(5) Ext. thermistor</b>	<b>(5) External thermistor</b>
SWB	Switch box

English	Translation
<b>(6) Field supplied options</b>	<b>(6) Field supplied options</b>
12 V DC pulse detection (voltage supplied by PCB)	12 V DC pulse detection (voltage supplied by PCB)
230 V AC supplied by PCB	230 V AC supplied by PCB
Continuous	Continuous current
DHW pump output	Domestic hot water pump output
DHW pump	Domestic hot water pump
Electrical meters	Electrical meters
For safety thermostat	For safety thermostat
Inrush	Inrush current
Max. load	Maximum load
Normally closed	Normally closed
Normally open	Normally open
Safety thermostat contact: 16 V DC detection (voltage supplied by PCB)	Safety thermostat contact: 16 V DC detection (voltage supplied by PCB)
Shut-off valve	Shut-off valve
SWB	Switch box
<b>(7) Option PCBs</b>	<b>(7) Option PCBs</b>
Alarm output	Alarm output
Changeover to ext. heat source	Changeover to external heat source
Max. load	Maximum load
Min. load	Minimum load
Only for demand PCB option	Only for demand PCB option
Only for digital I/O PCB option	Only for digital I/O PCB option
Options: ext. heat source output, solar pump connection, alarm output	Options: external heat source output, solar pump connection, alarm output
Options: On/OFF output	Options: On/OFF output
Power limitation digital inputs: 12 V DC / 12 mA detection (voltage supplied by PCB)	Power limitation digital inputs: 12 V DC / 12 mA detection (voltage supplied by PCB)
Refer to operation manual	Refer to operation manual
Solar input	Solar input
Solar pump connection	Solar pump connection
Space C/H On/OFF output	Space cooling/heating On/OFF output
SWB	Switch box
<b>(8) External On/OFF thermostats and heat pump convector</b>	<b>(8) External On/OFF thermostats and heat pump convector</b>
Additional LWT zone	Additional leaving water temperature zone
Main LWT zone	Main leaving water temperature zone
Only for external sensor (floor/ambient)	Only for external sensor (floor or ambient)
Only for heat pump convector	Only for heat pump convector
Only for wired On/OFF thermostat	Only for wired On/OFF thermostat
Only for wireless On/OFF thermostat	Only for wireless On/OFF thermostat

**Electrical connection diagram**

For more details, please check the unit wiring.



**Notes:**

- In case of signal cable: keep minimum distance to power cables >5 cm
- Available heaters depending on model: see combination table

4D111879D

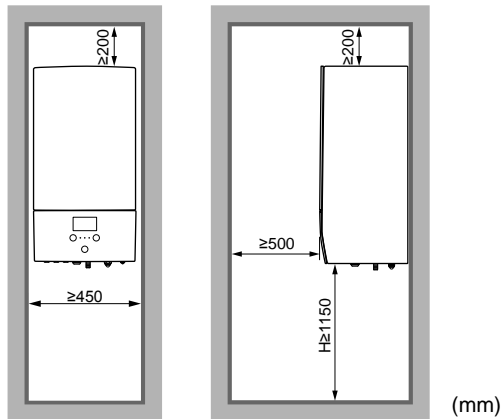
## 8 Technical data

### 8.3 Table 1 – Maximum refrigerant charge allowed in a room: indoor unit

$A_{room}$ (m <sup>2</sup> )	Maximum refrigerant charge in a room ( $m_{max}$ ) (kg)							
	H=1150 mm	H=1200 mm	H=1300 mm	H=1400 mm	H=1500 mm	H=1600 mm	H=1700 mm	H=1800 mm
1	0.25	0.26	0.29	0.31	0.33	0.36	0.38	0.40
2	0.51	0.53	0.58	0.62	0.67	0.71	0.76	0.81
3	0.76	0.79	0.86	0.93	1.00	1.07	1.14	1.21
4	1.01	1.06	1.15	1.24	1.34	1.43	1.52	1.61
5	1.27	1.32	1.44	1.55	1.67	1.78	1.90	2.01
6	1.52	1.59	1.73	1.87	2.00	2.14	2.28	2.42
7	1.66	1.74	1.89	2.04	2.19	2.34	2.49	2.65
8	1.78	1.86	2.02	2.18	2.34	2.50	2.67	2.83
9	1.89	1.97	2.14	2.31	2.49	2.66	2.83	3.00
10	1.99	2.08	2.26	2.44	2.62	2.80	2.98	3.16

#### **i** INFORMATION

- H = Height measured from the bottom of the casing to the floor.
- For intermediate H values (i.e. when H is between two H values from the table), consider the value that corresponds to the lower H value from the table. If H=1450 mm, consider the value that corresponds to "H=1400 mm".
- For intermediate  $A_{room}$  values (i.e. when  $A_{room}$  is between two  $A_{room}$  values from the table), consider the value that corresponds to the lower  $A_{room}$  value from the table. If  $A_{room}=8.5$  m<sup>2</sup>, consider the value that corresponds to " $A_{room}=8$  m<sup>2</sup>".



### 8.4 Table 2 – Minimum floor area: indoor unit

$m_c$ (kg)	Minimum floor area (m <sup>2</sup> )							
	H=1150 mm	H=1200 mm	H=1300 mm	H=1400 mm	H=1500 mm	H=1600 mm	H=1700 mm	H=1800 mm
1.84	8.57	7.84	6.64	5.92	5.51	5.16	4.84	4.57
1.86	8.76	8.02	6.78	5.98	5.57	5.21	4.90	4.62
1.88	8.95	8.19	6.93	6.05	5.63	5.27	4.95	4.67
1.90	9.14	8.36	7.08	6.11	5.69	5.32	5.00	4.72

#### **i** INFORMATION

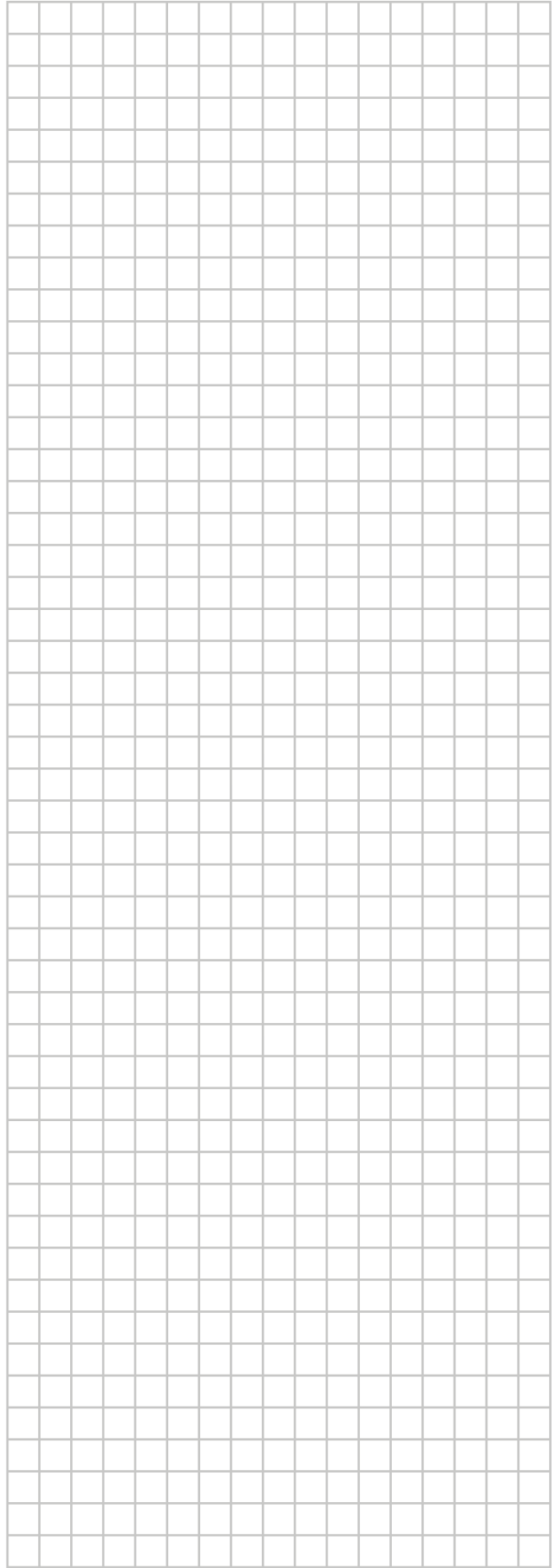
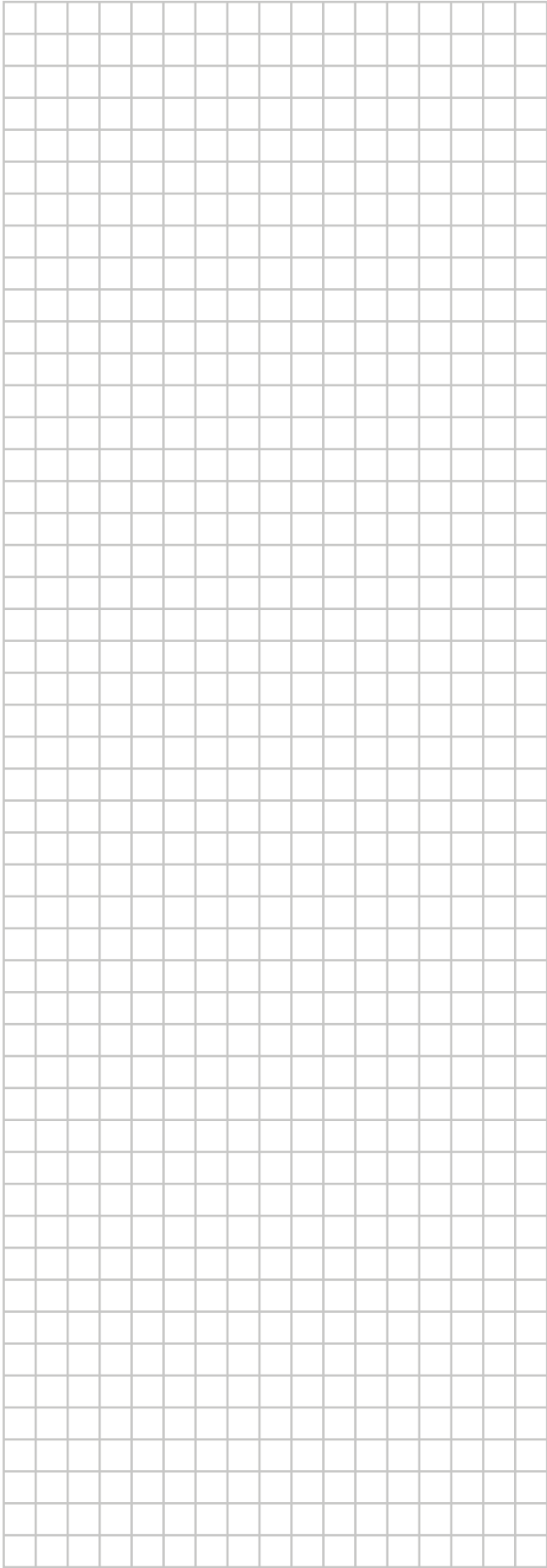
- H = Height measured from the bottom of the casing to the floor.
- For intermediate H values (i.e. when H is between two H values from the table), consider the value that corresponds to the lower H value from the table. If H=1450 mm, consider the value that corresponds to "H=1400 mm".
- Systems with a total refrigerant charge ( $m_c$ ) < 1.84 kg (i.e. if the piping length is < 27 m) are NOT subjected to any requirements to the installation room.
- Charges > 1.9 kg are NOT allowed in the unit.

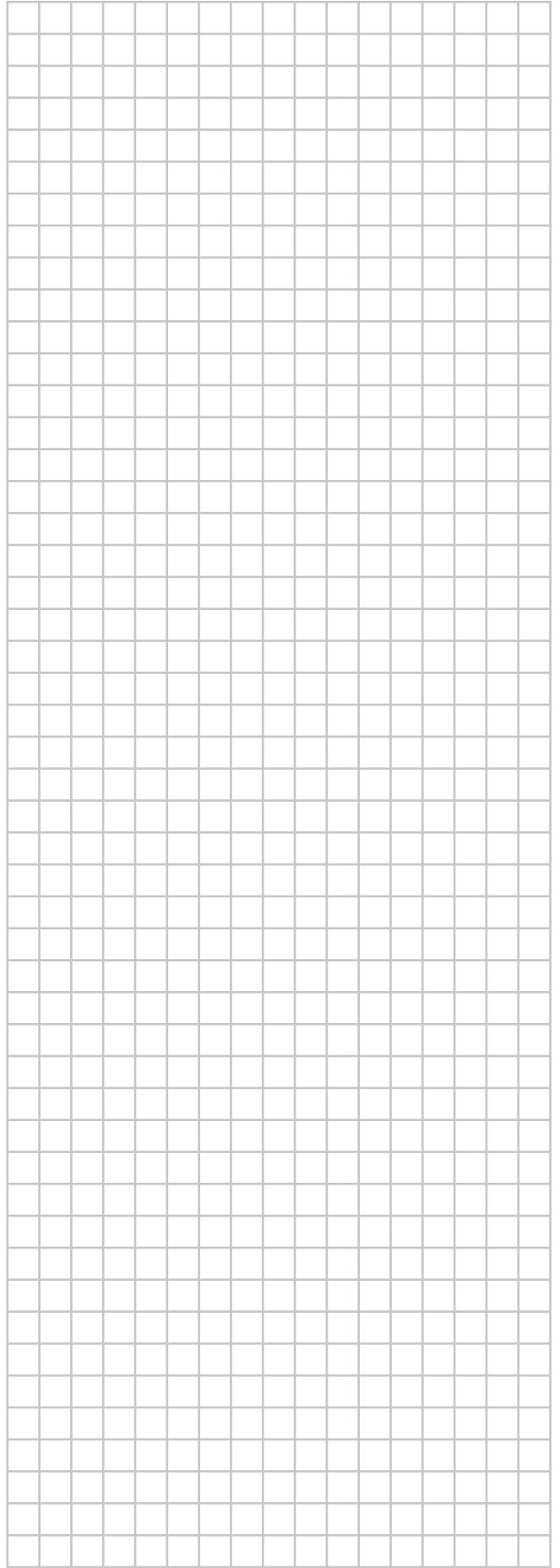
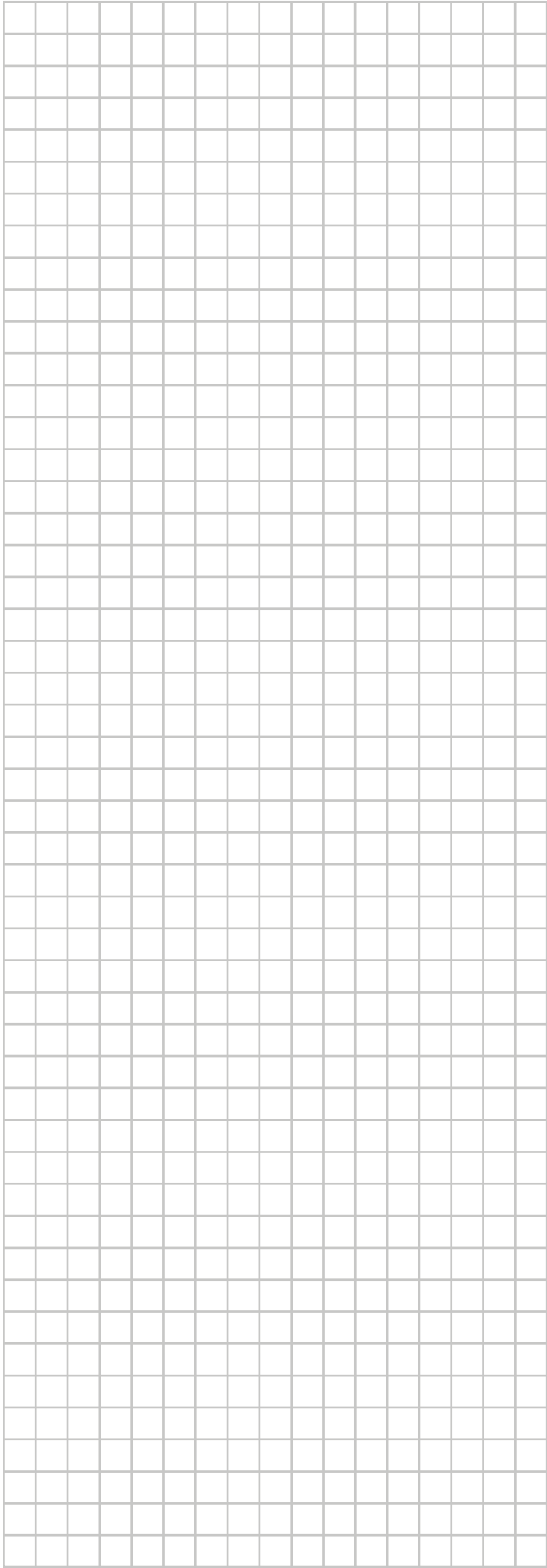
### 8.5 Table 3 – Minimum venting opening area for natural ventilation: indoor unit

$m_c$	$m_{max}$	$dm=m_c-m_{max}$ (kg)	Minimum venting opening area (cm <sup>2</sup> )							
			H=1150 mm	H=1200 mm	H=1300 mm	H=1400 mm	H=1500 mm	H=1600 mm	H=1700 mm	H=1800 mm
1.9	0.1	1.80	538	515	495	477	461	446	433	421
1.9	0.3	1.60	479	458	440	424	410	397	385	374
1.9	0.5	1.40	419	401	385	371	359	347	337	327
1.9	0.7	1.20	359	344	330	318	308	298	289	281
1.9	0.9	1.00	299	287	275	265	256	248	241	234
1.9	1.1	0.80	240	229	220	212	205	199	193	187
1.9	1.3	0.60	180	172	165	159	154	149	145	141
1.9	1.5	0.40	120	115	110	106	103	100	97	94
1.9	1.7	0.20	63	58	55	53	52	50	49	47

**INFORMATION**

- H = Height measured from the bottom of the casing to the floor.
- For intermediate H values (i.e. when H is between two H values from the table), consider the value that corresponds to the lower H value from the table. If H=1450 mm, consider the floor area that corresponds to "H=1400 mm".
- For intermediate dm values (i.e. when dm is between two dm values from the table), consider the value that corresponds to the higher dm value from the table. If dm=1.55 kg, consider the value that corresponds to "dm=1.6 kg".





ERC



4P495266-1 D 00000005

Copyright 2017 Daikin

**DAIKIN EUROPE N.V.**

Zandvoordestraat 300, B-8400 Oostende, Belgium

4P495266-1D 2019.10